

MASTERING THE ART OF DETAIL



Gitibus peditatur sa que repelitem et aliquis atis porernatur?



Gitibus peditatur sa que repelitem et aliquis atis porernatur?



Gitibus peditatur sa que repelitem et aliquis atis porernatur?

ASIA PACIFIC PARTNER

Import and export trade: At present, the company's products have been sold to more than a dozen countries and regions such as Europe, America, South America, Southeast Asia and Africa
 Project Engineering: Has cooperated with many domestic listed real estate companies and decoration companies: Fortune 500 companies: Huawei, China Resources, China Shipping, CIMC, China Railway Construction, industry standard companies: Gemdale, Rongsheng, Helenbergh, Xinli, Zhujiang Investment, Grandland, Yasha, Hongtao, Yuanpeng, Bauing... Establish a strong cooperative relationship.
 Channel sales: Establish long-term and stable cooperative relations with many world-class brand agents (distributors).

AUTOGRAPH
COLLECTION
HOTELS

DOUBLETREE
HOTEL
4 5 6 7 8 9 10 11 12 13 14 15 16 17 18 19 20 21 22 23 24 25 26 27 28 29 30 31 32 33 34 35 36 37 38 39 40 41 42 43 44 45 46 47 48 49 50 51 52 53 54 55 56 57 58 59 60 61 62 63 64 65 66 67 68 69 70 71 72 73 74 75 76 77 78 79 80 81 82 83 84 85 86 87 88 89 90 91 92 93 94 95 96 97 98 99 100

COURTYARD
BY HILTON

VANCE
HOTEL
万斯酒店

WANDA MOMENTS
万达美华酒店

MGM GRAND

SHERATON
EST. 1937

hotel
INDIGO

FOUR
POINTS
BY SHERATON

Boitelhof
HANGING

RENAISSANCE
HOTELS

MANGROVE TREE
红树林度假世界



Huge Market Base



Professional Construction Team



Mature Construction Experience



Serving 1,000,000+ families



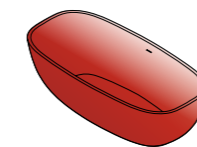
Mastering the Art of Detail

In creating a perfect bathing experience, the details of the bathtub play a vital role. They are the silent code of comfort and luxury. Details are reflected in the placement of the bathtub. Carefully planned to make it blend harmoniously with the surrounding environment, or become the focus of the space, or cleverly hidden in a corner to create a unique atmosphere. For example, leaning against a large window, you can enjoy the beautiful scenery outside the window while taking a bath and get in close contact with nature; or located in the center of the bathroom, surrounded by warm lights and soft fabrics. Details also lie in the use of space. The clever storage design can keep bath towels, bathrobes and bath products close at hand, but they are arranged in an orderly manner without destroying the overall beauty. The floor material around the bathtub is non-slip and comfortable to ensure your safety and comfort when entering and exiting the bathtub.

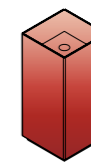
The height of the bathtub is also a science of details. The right height allows you to step in easily without feeling strenuous when getting up. The surrounding handrail design may seem insignificant, but it can provide stable support when needed, giving you a sense of security. Furthermore, the matching of the bathtub and other bathroom facilities cannot be ignored. The coordination of colors or the sharp contrast can show a unique style. It echoes the style of wall decoration and sanitary ware to build a harmonious and comfortable overall environment. With these details, the bathtub is no longer just a bathing tool, but a spiritual sanctuary where people can completely relax their body and mind and enjoy tranquility and beauty.

RESIN COLOR PRODUCT SERIES

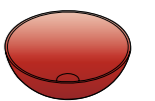
Transparent resin bathtub
6-39



Transparent resin pedestal basin
40-53



Transparent resin wash basin
54-59

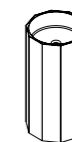


RESIN COLOR PRODUCT SERIES

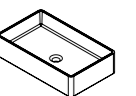
Artificial stone bathtub
60-147



Artificial stone pedestal basin
146-175



Artificial stone wash basin
174-181



In creating a perfect bathing experience, the details of the bathtub play a vital role. They are the silent code of comfort and luxury. Details are reflected in the placement of the bathtub. Carefully planned to make it blend harmoniously with the surrounding environment, or become the focus of the space, or cleverly hidden in a corner to create a unique atmosphere. For example, leaning against a large window, you can enjoy the beautiful scenery outside the window while taking a bath and get in close contact with nature; or located in the center of the bathroom, surrounded by warm lights and soft fabrics. Details also lie in the use of space. The clever storage design can keep bath towels, bathrobes and bath products close at hand, but they are arranged in an orderly manner without destroying the overall beauty. The floor material around the bathtub is non-slip and comfortable to ensure your safety and comfort when entering and exiting the bathtub.

The height of the bathtub is also a science of details. The right height allows you to step in easily without feeling strenuous when getting up. The surrounding handrail design may seem insignificant, but it can provide stable support when needed, giving you a sense of security. Furthermore, the matching of the bathtub and other bathroom facilities cannot be ignored. The coordination of colors or the sharp contrast can show a unique style. It echoes the style of wall decoration and sanitary ware to build a harmonious and comfortable overall environment. With these details, the bathtub is no longer just a bathing tool, but a spiritual sanctuary where people can completely relax their body and mind and enjoy tranquility and beauty.

透明树脂浴缸 TRANSPARENT RESIN BATHTUB

Artelinea Was Born In The Heart Of The Italian Renaissance. Its Profound Cultural Heritage And Innovative Spirit Have Subtly Promoted The Development Of The Bathroom Furniture Industry.





Nequae iis maximet oditaquo tet late voloriat omnisto doluptius et la quae simpore pratem expliquis dolorest apit harum aut apellaut la ium sam expera quo omnis exped eum utest pel ipit aborit eture, am alit, quat volupition conet audigen delignis moluptis apitibus cus.Ehenem autempo rumqui conem et eum ex ero quas dolupta simus

Nos mil mos asinihi tassunt.Nes sit pere simodis aspitas ipsant etur as secepel il mo qui id ut alitas moluptis si ne dunt, excepel itatio. Vid evenien imendus re veliquost, voluptaqui nimagnim sam repuda doluptur? Daerum voluptam cum ius eatur molorerio. Itatus, aut voles es audae. Ra corro cus quatent verem eum rerorem.



BW-1064C

Crystal resin bathtub (水晶树脂浴缸)

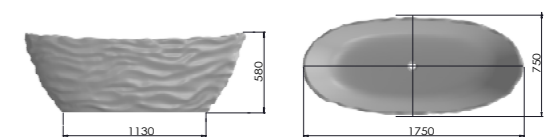
1750*750*580 mm

Material (材质)

透明树脂

Color (颜色)

常规颜色





BW-1075C

Transparent resin bathtub (透明树脂浴缸)

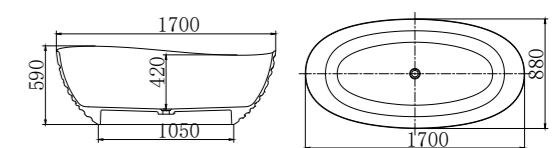
1700*880*590 mm

Material (材质)

透明树脂

Color (颜色)

常规颜色





BW-1071C

Crystal resin bathtub (水晶树脂浴缸)

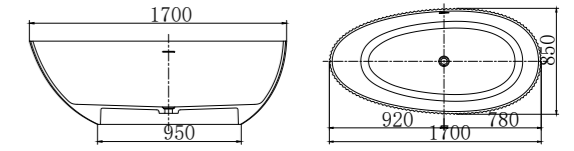
1700*850*550 mm

Material (材质)

透明树脂

Color (颜色)

常规颜色



BW-1070C

Crystal resin bathtub (水晶树脂浴缸)

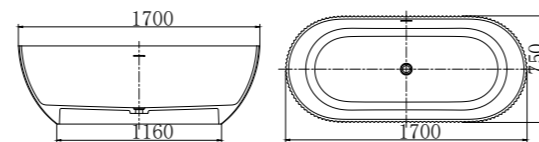
1700*750*550 mm

Material (材质)

透明树脂

Color (颜色)

常规颜色





BW-1072C

Transparent resin bathtub (透明树脂浴缸)

1600*760*560 mm

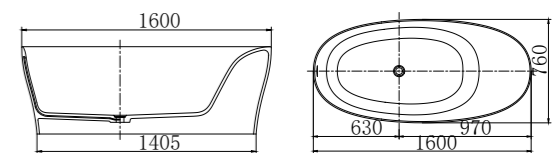
1700*800*600 mm

Material (材质)

透明树脂

Color (颜色)

常规颜色





BW-1055C

Transparent resin bathtub (透明树脂浴缸)

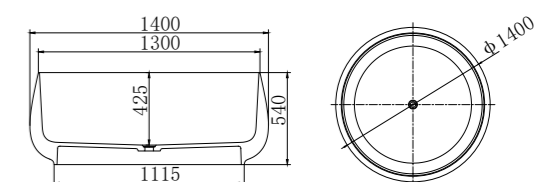
1400*1400*540 mm

Material (材质)

透明树脂

Color (颜色)

常规颜色





BW-1003C

Transparent resin bathtub (透明树脂浴缸)

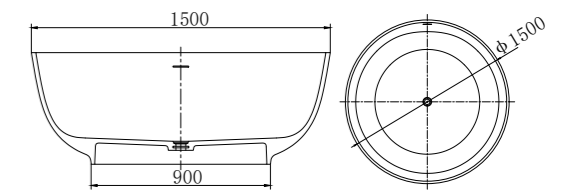
1400*1400*550 mm

Material (材质)

透明树脂

Color (颜色)

常规颜色



BW-1001C

Transparent resin bathtub (透明树脂浴缸)

1300*1300*550 mm

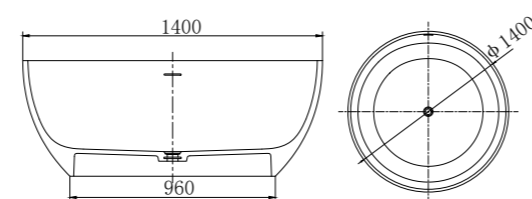
1400*1400*540 mm

Material (材质)

透明树脂

Color (颜色)

常规颜色





BW-1004C

Transparent resin bathtub (透明树脂浴缸)

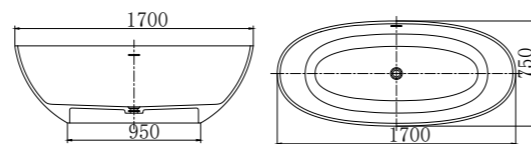
1300*720*550 mm 1400*750*550 mm
 1500*750*550 mm 1550*730*540 mm
 1600*780*550 mm 1650*750*550 mm
 1700*750*550 mm 1800*800*550 mm

Material (材质)

透明树脂

Color (颜色)

常规颜色



Nequae iis maximet oditaquo tet late voloriat omnisto doluptius et la quae simpore pratem expliquis dolorest apit harum aut apellaut la ium sam expera quo omnis exped eum utest pel ipit aborit eture, am alit, quat volupition conet audigen delignis moluptis apitibus cus Ehenem autempo rumqui conem et eum ex ero quas dolupta simus

Nos mil mos asinihi tassunt. Nes sit pere simodis aspitas ipsant etur as secepel il mo qui id ut alitas moluptis si ne dunt, excepel itatio. Vid evenien imendus re veliquost, voluptaqui nimagnim sam repuda doluptur? Daerum voluptam cum ius eatur molorerio. Itatus, aut voles es audae. Ra corro cus quatent verem eum rerorem.



BW-1005C

Transparent resin bathtub (透明树脂浴缸)

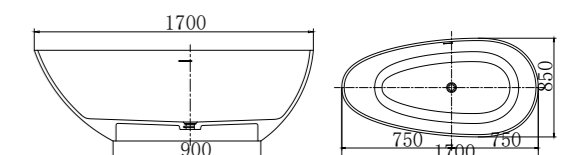
1300*700*540 mm 1400*750*520 mm
 1500*780*540 mm 1600*800*540 mm
 1700*850*550 mm 1800*850*550 mm

Material (材质)

透明树脂

Color (颜色)

常规颜色



Nequae iis maximet oditaquo tet late volariat omnisto doluptius et la quae simpore pratem expliquis dolorest apit harum aut apellaut la ium sam expera quo omnis exped eum utest pel ipit aborit eture, am alit, quat voluption conet audigen delignis moluptis apitibus cus.Ehenem autempo rumqui conem et eum ex ero quas dolupta simus

Nos mil mos asinihi tassunt.Nes sit pere simodis aspitas ipsant etur as secepel il mo qui id ut alitas moluptis si ne dunt, excepel itatio. Vid evenien imendus re veliquost, voluptaqui nimagnim sam repuda doluptur? Daerum voluptam cum ius eatur molorerio. Itatus, aut voles es audae. Ra corro cus quatent verem eum rerorem.



BW-1030C

Transparent resin bathtub (透明树脂浴缸)

1600*950*600 mm

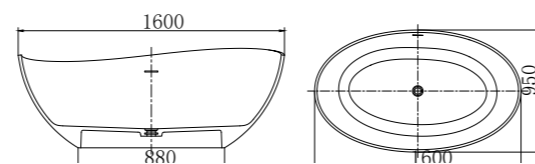
1800*1100*620 mm

Material (材质)

透明树脂

Color (颜色)

常规颜色





BW-1007C

Transparent resin bathtub (透明树脂浴缸)

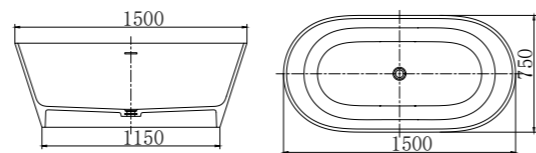
1400*700*550 mm 1500*750*540 mm
 1600*750*550 mm 1650*750*550 mm
 1700*780*550 mm

Material (材质)

透明树脂

Color (颜色)

常规颜色



Nequae iis maximet oditaquo tet late voloriat omnisto doluptius et la quae simpore pratem expliquis dolorest apit harum aut apellaut la ium sam expera quo omnis exped eum utest pel ipit aborit eture, am alit, quat volupition conet audigen delignis moluptis apitibus cus Ehenem autempo rumqui conem et eum ex ero quas dolupta simus

Nos mil mos asinihi tassunt. Nes sit pere simodis aspitas ipsant etur as secepel il mo qui id ut alitas moluptis si ne dunt, excepel itatio. Vid evenien imendus re veliquost, voluptaqui nimagnim sam repuda doluptur? Daerum voluptam cum ius eatur molorerio. Itatus, aut voles es audae. Ra corro cus quatent verem eum rerorem.



BW-1010C

Transparent resin bathtub (透明树脂浴缸)

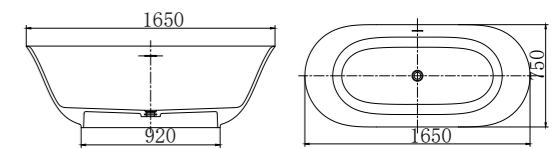
1650*750*540 mm

Material (材质)

透明树脂

Color (颜色)

常规颜色



Nequae iis maximet oditaquo tet late volariat omnisto doluptius et la quae simpore pratem expliquis dolorest apit harum aut apellaut la ium sam expera quo omnis exped eum utest pel ipit aborit eture, am alit, quat voluption conet audigen delignis moluptis apitibus cus.Ehenem autempo rumqui conem et eum ex ero quas dolupta simus

Nos mil mos asinihi tassunt.Nes sit pere simodis aspitas ipsant etur as secepel il mo qui id ut alitas moluptis si ne dunt, excepel itatio. Vid evenien imendus re veliquost, voluptaqui nimagnim sam repuda doluptur? Daerum voluptam cum ius eatur molorerio. Itatus, aut voles es audae. Ra corro cus quatent verem eum rerorem.



BW-1038C

Transparent resin bathtub (透明树脂浴缸)

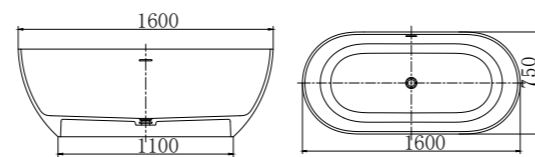
1400*700*550 mm 1500*750*550 mm
1600*750*550 mm 1750*750*550 mm
1700*700*550 mm

Material (材质)

透明树脂

Color (颜色)

常规颜色



BW-1040C

Transparent resin bathtub (透明树脂浴缸)

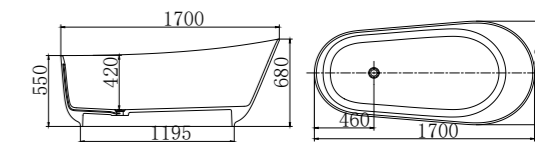
1500*750*680 mm
1700*800*680 mm

Material (材质)

透明树脂

Color (颜色)

常规颜色





Nequae iis maximet oditaquo tet late voloriat omnisto doluptius et la quae simpore pratem expliquis dolorest apit harum aut apellaut la ium sam expera quo omnis exped eum utest pel ipit aborit eture, am alit, quat volupition conet audigen delignis moluptis apitibus cus.Ehenem autempo rumqui conem et eum ex ero quas dolupta simus

Nos mil mos asinihi tassunt.Nes sit pere simodis aspitas ipsant etur as secepel il mo qui id ut alitas moluptis si ne dunt, excepel itatio. Vid evenien imendus re veliquost, voluptaqui nimagnim sam repuda doluptur? Daerum voluptam cum ius eatur molorerio. Itatus, aut voles es audae. Ra corro cus quatent verem eum rerorem.



BW-1052C

Transparent resin bathtub (透明树脂浴缸)

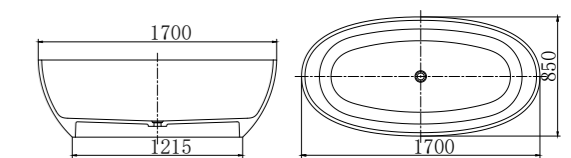
1700*850*550 mm

Material (材质)

透明树脂

Color (颜色)

常规颜色



Nequae iis maximet oditaquo tet late voloriat omnisto doluptius et la quae simpore pratem expliquis dolorest apit harum aut apellaut la ium sam expera quo omnis exped eum utest pel ipit aborit eture, am alit, quat voluption conet audigen delignis moluptis apitibus cus.Ehenem autempo rumqui conem et eum ex ero quas dolupta simus

Nos mil mos asinihi tassunt.Nes sit pere simodis aspitas ipsant etur as secepel il mo qui id ut alitas moluptis si ne dunt, excepel itatio. Vid evenien imendus re veliquost, voluptaqui nimagnim sam repuda doluptur? Daerum voluptam cum ius eatur molorerio. Itatus, aut voles es audae. Ra corro cus quatent verem eum rerorem.



BW-1061C

Transparent resin bathtub (透明树脂浴缸)

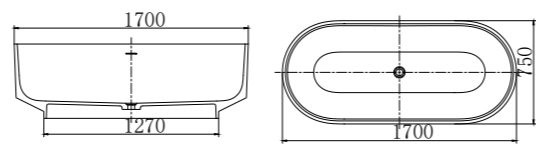
1700*750*540 mm

Material (材质)

透明树脂

Color (颜色)

常规颜色



BW-1063C

Transparent resin bathtub (透明树脂浴缸)

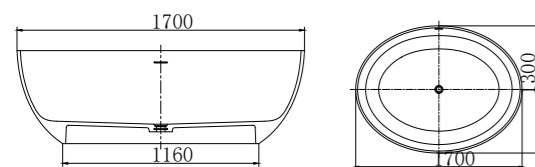
1400*1200*550 mm

Material (材质)

透明树脂

Color (颜色)

常规颜色





BW-1068C

Transparent resin bathtub (透明树脂浴缸)

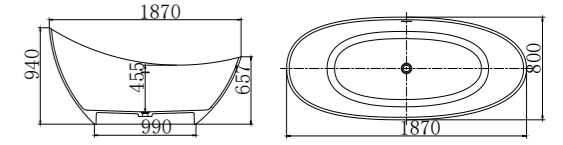
1870*800*940 mm

Material (材质)

透明树脂

Color (颜色)

常规颜色



BW-1069C

Transparent resin bathtub (透明树脂浴缸)

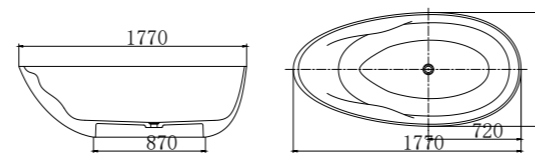
1770*885*550 mm

Material (材质)

透明树脂

Color (颜色)

常规颜色



Nequae iis maximet oditaquo tet late volariat omnisto doluptius et la quae simpore pratem expliquis dolorest apit harum aut apellaut la ium sam expera quo omnis exped eum utest pel ipit aborit eture, am alit, quat voluption conet audigen delignis moluptis apitibus cus Ehenem autempo rumqui conem et eum ex ero quas dolupta simus

Nos mil mos asinihi tassunt. Nes sit pere simodis aspitas ipsant etur as secepel il mo qui id ut alitas moluptis si ne dunt, excepel itatio. Vid evenien imendus re veliquost, voluptaqui nimagnim sam repuda doluptur? Daerum voluptam cum ius eatur molorerio. Itatus, aut voles es audae. Ra corro cus quatent verem eum rerorem.



BW-1018C

Transparent resin bathtub (透明树脂浴缸)

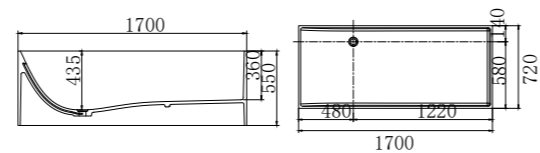
1700*720*550 mm

Material (材质)

透明树脂

Color (颜色)

常规颜色



BW-1039C

Transparent resin bathtub (透明树脂浴缸)

1500*750*550 mm

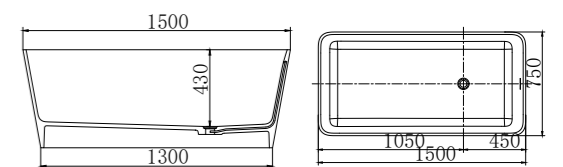
1700*800*550 mm

Material (材质)

透明树脂

Color (颜色)

常规颜色





BW-1062C

Transparent resin bathtub (透明树脂浴缸)

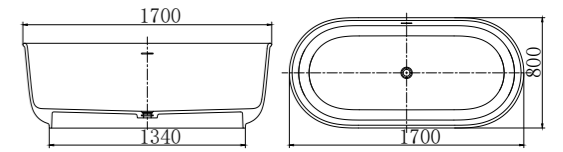
1700*800*580 mm

Material (材质)

透明树脂

Color (颜色)

常规颜色



BW-1044C

Transparent resin bathtub (透明树脂浴缸)

1600*750*550 mm

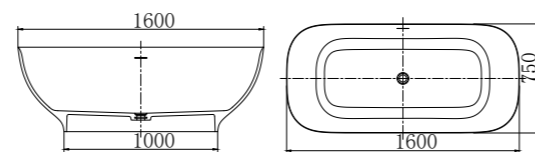
1700*750*550 mm

Material (材质)

透明树脂

Color (颜色)

常规颜色



In creating a perfect bathing experience, the details of the bathtub play a vital role. They are the silent code of comfort and luxury. Details are reflected in the placement of the bathtub. Carefully planned to make it blend harmoniously with the surrounding environment, or become the focus of the space, or cleverly hidden in a corner to create a unique atmosphere. For example, leaning against a large window, you can enjoy the beautiful scenery outside the window while taking a bath and get in close contact with nature; or located in the center of the bathroom, surrounded by warm lights and soft fabrics. Details also lie in the use of space. The clever storage design can keep bath towels, bathrobes and bath products close at hand, but they are arranged in an orderly manner without destroying the overall beauty. The floor material around the bathtub is non-slip and comfortable to ensure your safety and comfort when entering and exiting the bathtub.

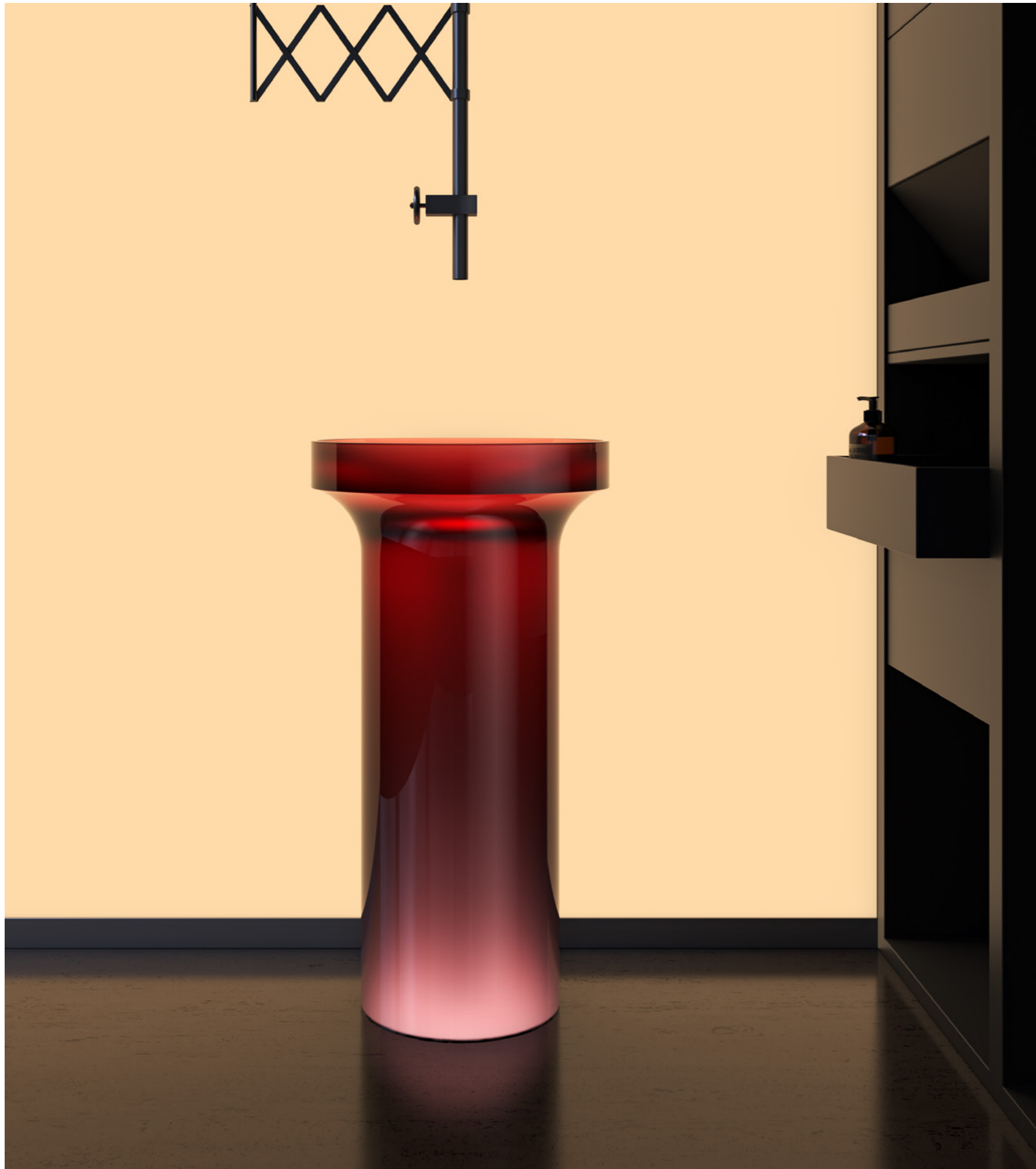
The height of the bathtub is also a science of details. The right height allows you to step in easily without feeling strenuous when getting up. The surrounding handrail design may seem insignificant, but it can provide stable support when needed, giving you a sense of security. Furthermore, the matching of the bathtub and other bathroom facilities cannot be ignored. The coordination of colors or the sharp contrast can show a unique style. It echoes the style of wall decoration and sanitary ware to build a harmonious and comfortable overall environment. With these details, the bathtub is no longer just a bathing tool, but a spiritual sanctuary where people can completely relax their body and mind and enjoy tranquility and beauty.

透明树脂立柱盆

TRANSPARENT RESIN PEDESTAL BASIN

Artelinea Was Born In The Heart Of The Italian Renaissance. Its Profound Cultural Heritage And Innovative Spirit Have Subtly Promoted The Development Of The Bathroom Furniture Industry.





Nequae iis maximet oditaquo tet late voloriat omnisto doluptius et la quae simpore pratem expliquis dolorest apit harum aut apellaut la ium sam expera quo omnis exped eum utest pel ipit aborit eture, am alit, quat volupition conet audigen delignis moluptis apitibus cus.Ehenem autempo rumqui conem et eum ex ero quas dolupta simus

Nos mil mos asinihi tassunt.Nes sit pere simodis aspitas ipsant etur as secepel il mo qui id ut alitas moluptis si ne dunt, excepel itatio. Vid evenien imendus re veliquost, voluptaqui nimagnim sam repuda doluptur? Daerum voluptam cum ius eatur molorerio. Itatus, aut voles es audae. Ra corro cus quatent verem eum rerorem.



BW-3050C

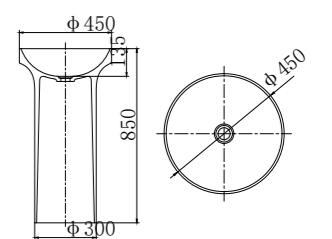
Transparent resin pedestal basin (透明树脂立柱盆)
450*450*850 mm

Material (材质)

透明树脂

Color (颜色)

常规颜色



Nequae iis maximet oditaquo tet late volariat omnisto doluptius et la quae simpore pratem expliquis dolorest apit harum aut apellaut la ium sam expera quo omnis exped eum utest pel ipit aborit eture, am alit, quat voluption conet audigen delignis moluptis apitibus cus.Ehenem autempo rumqui conem et eum ex ero quas dolupta simus

Nos mil mos asinihi tassunt.Nes sit pere simodis aspitas ipsant etur as secepel il mo qui id ut alitas moluptis si ne dunt, excepel itatio. Vid evenien imendus re veliquost, voluptaqui nimagnim sam repuda doluptur? Daerum voluptam cum ius eatur molorerio. Itatus, aut voles es audae. Ra corro cus quatent verem eum rerorem.



BW-3047C

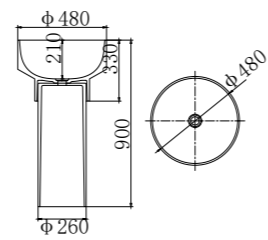
Transparent resin pedestal basin (透明树脂立柱盆)
480*480*900 mm

Material (材质)

透明树脂

Color (颜色)

常规颜色



BW-3038C

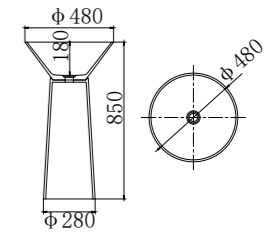
Transparent resin pedestal basin (水晶树脂立柱盆)
480*480*850 mm

Material (材质)

透明树脂

Color (颜色)

常规颜色



BW-3001C

Transparent resin pedestal basin (水晶树脂立柱盆)

400*400*900 mm

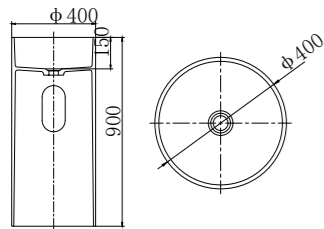


Material (材质)

透明树脂

Color (颜色)

常规颜色



BW-3011C

Transparent resin pedestal basin (透明树脂立柱盆)

400*400*900 mm

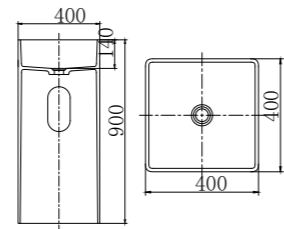


Material (材质)

透明树脂

Color (颜色)

常规颜色



Nequae iis maximet oditaquo tet late voloriat omnisto doluptius et la quae simpore pratem expliquis dolorest apit harum aut apellaut la ium sam expera quo omnis exped eum utest pel ipit aborit eture, am alit, quat volupition conet audigen delignis moluptis apitibus cus.Ehenem autempo rumqui conem et eum ex ero quas dolupta simus

Nos mil mos asinihi tassunt.Nes sit pere simodis aspitas ipsant etur as secepel il mo qui id ut alitas moluptis si ne dunt, excepel itatio. Vid evenien imendus re veliquost, voluptaqui nimagnim sam repuda doluptur? Daerum voluptam cum ius eatur molorerio. Itatus, aut voles es audae. Ra corro cus quatent verem eum rerorem.

BW-3039C

Transparent resin pedestal basin (透明树脂立柱盆)

500*476*890 mm

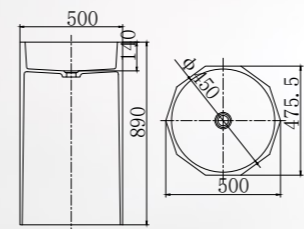


Material (材质)

透明树脂

Color (颜色)

常规颜色



Nequae iis maximet oditaquo tet late volariat omnisto doluptius et la quae simpore pratem expliquis dolorest apit harum aut apellaut la ium sam expera quo omnis exped eum utest pel ipit aborit eture, am alit, quat voluption conet audigen delignis moluptis apitibus cus.Ehenem autempo rumqui conem et eum ex ero quas dolupta simus

Nos mil mos asinihi tassunt.Nes sit pere simodis aspitas ipsant etur as secepel il mo qui id ut alitas moluptis si ne dunt, excepel itatio. Vid evenien imendus re veliquost, voluptaqui nimagnim sam repuda doluptur? Daerum voluptam cum ius eatur molorerio. Itatus, aut voles es audae. Ra corro cus quatent verem eum rerorem.



BW-3035C

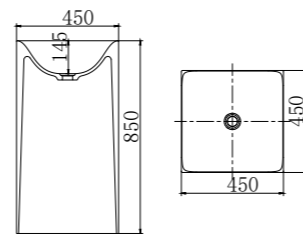
Transparent resin pedestal basin (透明树脂立柱盆)
450*450*850 mm

Material (材质)

透明树脂

Color (颜色)

常规颜色



BW-3036C

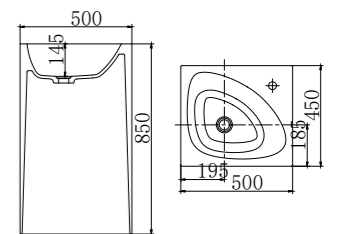
Transparent resin pedestal basin (透明树脂立柱盆)
500*450*850 mm

Material (材质)

透明树脂

Color (颜色)

常规颜色



BW-3033C

Transparent resin pedestal basin (透明树脂立柱盆)

480*480*850 mm

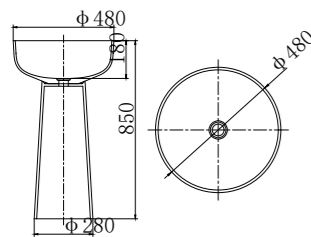


Material (材质)

透明树脂

Color (颜色)

常规颜色



BW-3020C

Transparent resin pedestal basin (透明树脂立柱盆)

450*450*880 mm

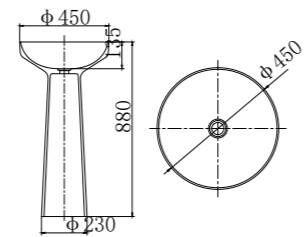


Material (材质)

透明树脂

Color (颜色)

常规颜色



Nequae ilis maximet oditaquo tet late voloriat omnisto doluptius et la quae simpore pratem expliquis dolorest apit harum aut apellaut la ium sam expera quo omnis exped eum utest pel ipit aborit eture, am alit, quat volupition conet audigen delignis moluptis apitibus cus.Ehenem autempo rumqui conem et eum ex ero quas dolupta simus

Nos mil mos asinihi tassunt.Nes sit pere simodis aspitas ipsant etur as secepel il mo qui id ut alitas moluptis si ne dunt, excepel itatio. Vid evenien imendus re veliquost, voluptaqui nimagnim sam repuda doluptur? Daerum voluptam cum ius eatur molorerio. Itatus, aut voles es audae. Ra corro cus quatent verem eum rerorem.

BW-3053C

Transparent resin pedestal basin (透明树脂立柱盆)

520*495*850 mm

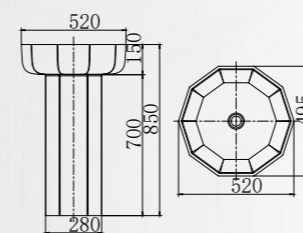


Material (材质)

透明树脂

Color (颜色)

常规颜色



Nequae iis maximet oditaquo tet late volariat omnisto doluptius et la quae simpore pratem expliquis dolorest apit harum aut apellaut la ium sam expera quo omnis exped eum utest pel ipit aborit eture, am alit, quat voluption conet audigen delignis moluptis apitibus cus.Ehenem autempo rumqui conem et eum ex ero quas dolupta simus

Nos mil mos asinihi tassunt.Nes sit pere simodis aspitas ipsant etur as secepel il mo qui id ut alitas moluptis si ne dunt, excepel itatio. Vid evenien imendus re veliquost, voluptaqui nimagnim sam repuda doluptur? Daerum voluptam cum ius eatur molorerio. Itatus, aut voles es audae. Ra corro cus quatent verem eum rerorem.



BW-3006C

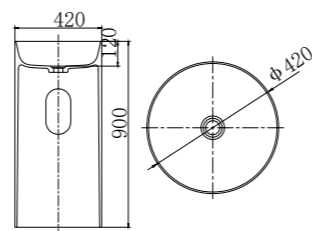
Transparent resin pedestal basin (透明树脂立柱盆)
420*420*900 mm

Material (材质)

透明树脂

Color (颜色)

常规颜色



BW-3051C

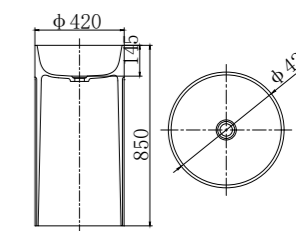
Transparent resin pedestal basin (透明树脂立柱盆)
420*420*850 mm

Material (材质)

透明树脂

Color (颜色)

常规颜色



In creating a perfect bathing experience, the details of the bathtub play a vital role. They are the silent code of comfort and luxury. Details are reflected in the placement of the bathtub. Carefully planned to make it blend harmoniously with the surrounding environment, or become the focus of the space, or cleverly hidden in a corner to create a unique atmosphere. For example, leaning against a large window, you can enjoy the beautiful scenery outside the window while taking a bath and get in close contact with nature; or located in the center of the bathroom, surrounded by warm lights and soft fabrics. Details also lie in the use of space. The clever storage design can keep bath towels, bathrobes and bath products close at hand, but they are arranged in an orderly manner without destroying the overall beauty. The floor material around the bathtub is non-slip and comfortable to ensure your safety and comfort when entering and exiting the bathtub.

The height of the bathtub is also a science of details. The right height allows you to step in easily without feeling strenuous when getting up. The surrounding handrail design may seem insignificant, but it can provide stable support when needed, giving you a sense of security. Furthermore, the matching of the bathtub and other bathroom facilities cannot be ignored. The coordination of colors or the sharp contrast can show a unique style. It echoes the style of wall decoration and sanitary ware to build a harmonious and comfortable overall environment. With these details, the bathtub is no longer just a bathing tool, but a spiritual sanctuary where people can completely relax their body and mind and enjoy tranquility and beauty.

透明树脂洗手盆

TRANSPARENT RESIN WASH BASIN

Artelina Was Born In The Heart Of The Italian Renaissance. Its Profound Cultural Heritage And Innovative Spirit Have Subtly Promoted The Development Of The Bathroom Furniture Industry.





Nequae ilis maximet oditaquo tet late voloriat omnisto doluptius et la quae simpore pratem expliquis dolorest apit harum aut apellaut la ium sam expera quo omnis exped eum utest pel ipit aborit eture, am alit, quat volupition conet audigen delignis moluptis apitibus cus.Ehenem autempo rumqui conem et eum ex ero quas dolupta simus

Nos mil mos asinihi tassunt.Nes sit pere simodis aspitas ipsant etur as secepel il mo qui id ut alitas moluptis si ne dunt, excepel itatio. Vid evenien imendus re veliquost, voluptaqui nimagmim sam repuda doluptur? Daerum voluptam cum ius eatur molorerio. Itatus, aut voles es audae. Ra corro cus quatent verem eum rerorem.

BW-2007-2C

Transparent resin wash basin (透明树脂洗手盆)

580*380*140 mm

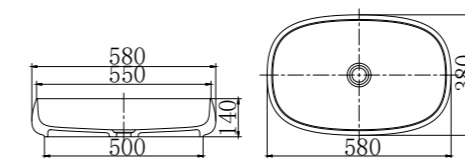


Material (材质)

透明树脂

Color (颜色)

常规颜色



BW-2129C

Transparent resin wash basin (透明树脂洗手盆)

550*340*130 mm

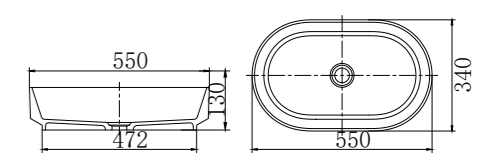


Material (材质)

透明树脂

Color (颜色)

常规颜色



BW-2005C

Transparent resin wash basin (透明树脂洗手盆)

400*400*120 mm

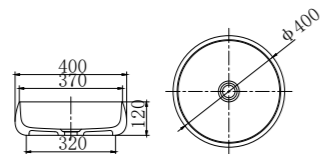


Material (材质)

透明树脂

Color (颜色)

常规颜色



BW-2018C

Transparent resin wash basin (透明树脂洗手盆)

400*400*120 mm

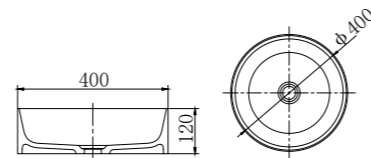


Material (材质)

透明树脂

Color (颜色)

常规颜色



BW-2039C

Transparent resin wash basin (透明树脂洗手盆)

400*400*150 mm

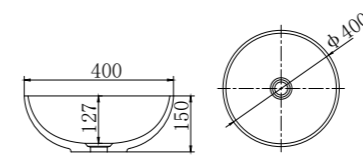


Material (材质)

透明树脂

Color (颜色)

常规颜色



BW-2097C

Transparent resin wash basin (透明树脂洗手盆)

480*480*205 mm

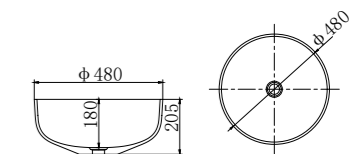


Material (材质)

透明树脂

Color (颜色)

常规颜色



BW-2006C

Transparent resin wash basin (透明树脂洗手盆)

580*380*120 mm

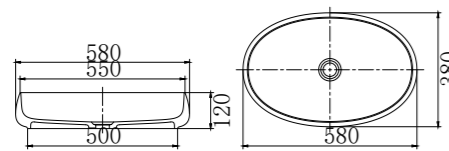


Material (材质)

透明树脂

Color (颜色)

常规颜色



BW-2007C

Transparent resin wash basin (透明树脂洗手盆)

580*380*120 mm

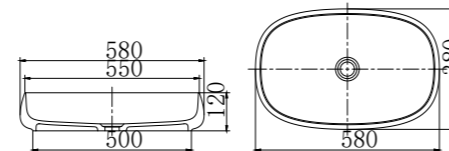


Material (材质)

透明树脂

Color (颜色)

常规颜色



BW-2032C

Transparent resin wash basin (透明树脂洗手盆)

570*380*150 mm

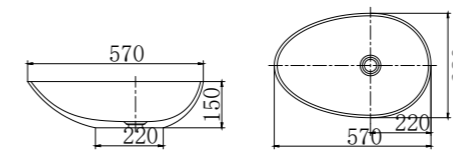


Material (材质)

透明树脂

Color (颜色)

常规颜色



BW-2093C

Transparent resin wash basin (透明树脂洗手盆)

600*400*150 mm

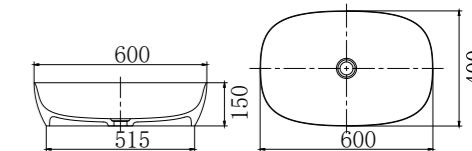


Material (材质)

透明树脂

Color (颜色)

常规颜色



In creating a perfect bathing experience, the details of the bathtub play a vital role. They are the silent code of comfort and luxury. Details are reflected in the placement of the bathtub. Carefully planned to make it blend harmoniously with the surrounding environment, or become the focus of the space, or cleverly hidden in a corner to create a unique atmosphere. For example, leaning against a large window, you can enjoy the beautiful scenery outside the window while taking a bath and get in close contact with nature; or located in the center of the bathroom, surrounded by warm lights and soft fabrics. Details also lie in the use of space. The clever storage design can keep bath towels, bathrobes and bath products close at hand, but they are arranged in an orderly manner without destroying the overall beauty. The floor material around the bathtub is non-slip and comfortable to ensure your safety and comfort when entering and exiting the bathtub.

The height of the bathtub is also a science of details. The right height allows you to step in easily without feeling strenuous when getting up. The surrounding handrail design may seem insignificant, but it can provide stable support when needed, giving you a sense of security. Furthermore, the matching of the bathtub and other bathroom facilities cannot be ignored. The coordination of colors or the sharp contrast can show a unique style. It echoes the style of wall decoration and sanitary ware to build a harmonious and comfortable overall environment. With these details, the bathtub is no longer just a bathing tool, but a spiritual sanctuary where people can completely relax their body and mind and enjoy tranquility and beauty.

人造石浴缸 ARTIFICIAL STONE BATHTUB

Artelina Was Born In The Heart Of The Italian Renaissance. Its Profound Cultural Heritage And Innovative Spirit Have Subtly Promoted The Development Of The Bathroom Furniture Industry.





人造石材料通过机器注入模具，固化脱模后，必须通过人工打磨以去除表面的瑕疵缺陷，再逐级打磨至细腻光滑。凡弧形、直角位置，需适当用力，动作要轻，保持产品原有轮廓。每一层打磨工序均有严格把控，确保产品每处柔润光。

The artificial stone material is injected into the mold through the machine. After solidification and demoulding, it must be manually polished to remove the surface defects, and then polished step by step to be fine and smooth. For arc and right angle positions, appropriate force shall be applied and the action shall be light to maintain the original contour of the product. Every layer of grinding process has strict control to ensure the smoothness of every part of the product.

The artificial stone material is injected into the mold through the machine. After solidification and demoulding, it must be manually polished to remove the surface defects, and then polished step by step to be fine and smooth.

For arc and right angle positions, appropriate force shall be applied and the action shall be light to maintain the original contour of the product.



健康材质
Healthy Material



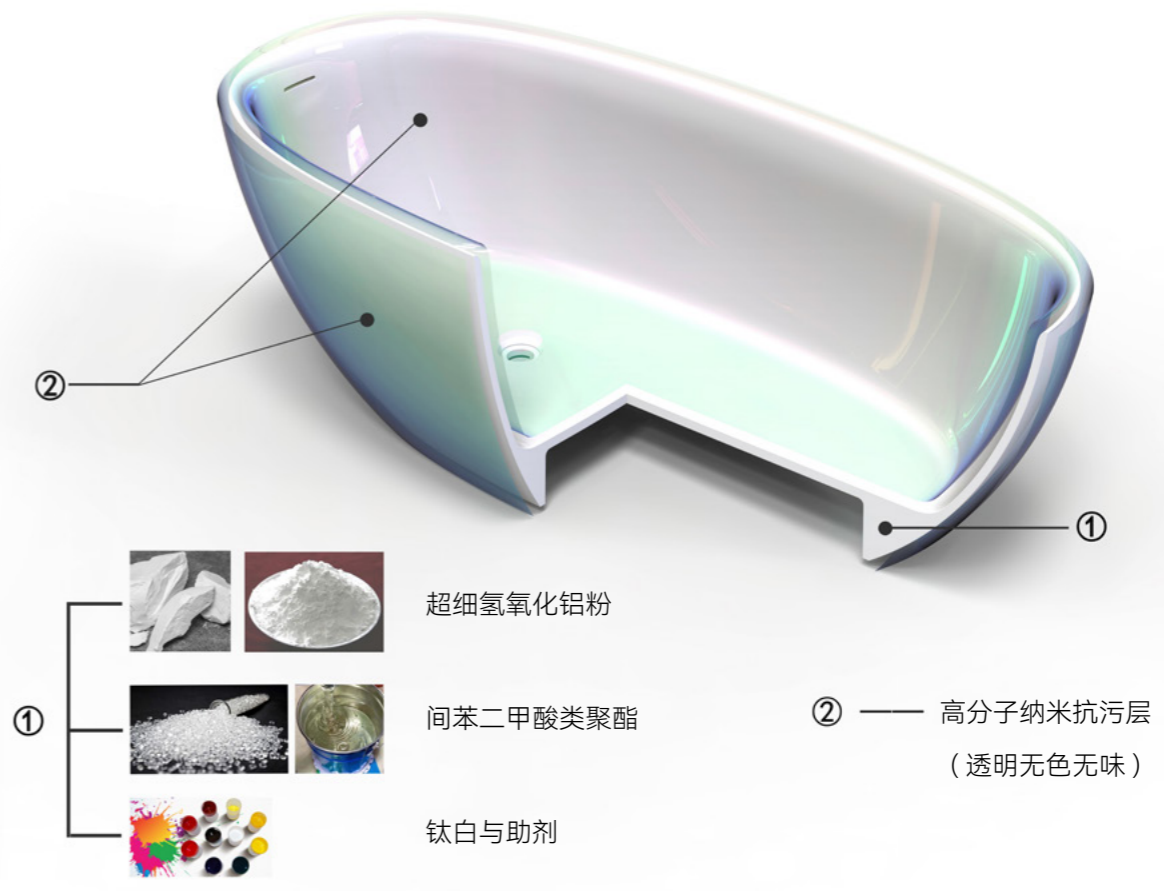
无缝无孔
Seamless Without Hole



阻隔油污
Block Oil Stains



不易变色
Not Easy To Discolor





BW-1002

Artificial stone bathtub (人造石浴缸)

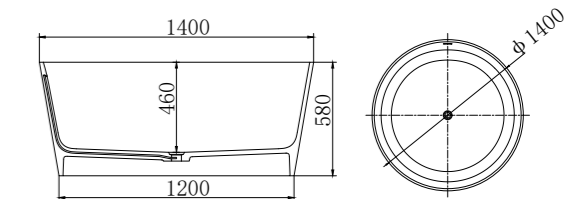
1400*1400*585 mm

Material (材质)

人造石

Color (颜色)

白色哑光



Ona

Balanced lines define a bathtub with an organic design and a practical shelf for toiletries.



BW-1003

Artificial stone bathtub (人造石浴缸)

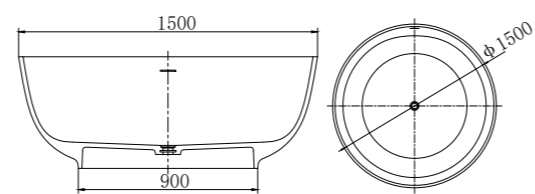
1400*1400*550 mm
1500*1500*560 mm

Material (材质)

人造石

Color (颜色)

外红内白





BW-1030

Artificial stone bathtub (人造石浴缸)

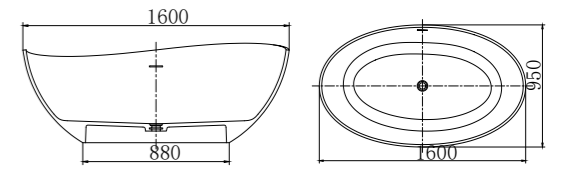
1600*950*600 mm
1800*1100*620 mm

Material (材质)

人造石

Color (颜色)

白色哑光



BW-1021

Artificial stone bathtub (人造石浴缸)

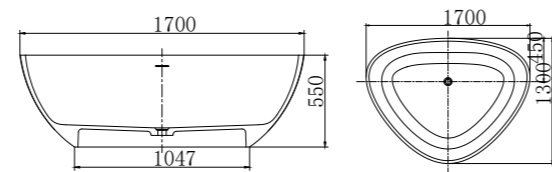
1700*1300*550 mm

Material (材质)

人造石

Color (颜色)

白色哑光





Ona

Balanced lines define a bathtub with an organic design and a practical shelf for toiletries.



BW-1004

Artificial stone bathtub (人造石浴缸)

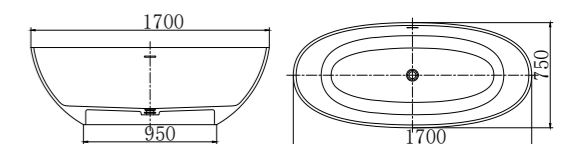
1300*720*550 mm 1400*750*550 mm
 1500*750*550 mm 1550*730*540 mm
 1600*780*570 mm 1650*750*550 mm
 1700*750*550 mm 1800*800*550 mm

Material (材质)

人造石

Color (颜色)

白色哑光



ONA

Balanced lines define a bathtub with an organic design and a practical shelf for toiletries.



BW-1005

Artificial stone bathtub (人造石浴缸)

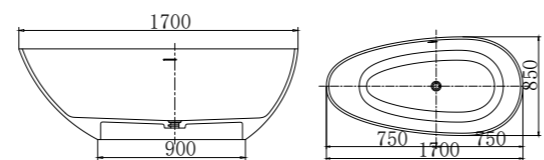
1300*700*540 mm 1400*750*520 mm
1500*780*540 mm 1600*800*540 mm
1700*850*550 mm 1800*850*550 mm

Material (材质)

人造石

Color (颜色)

白色哑光





Nequae iis maximet oditaquo tet late voloriat omnisto doluptius et la quae simpore pratem expliquis dolorest apit harum aut apellaut la ium sam expera quo omnis exped eum utest pel ipit aborit eture, am alit, quat volupition conet audigen delignis moluptis apitibus cus.Ehenem autempo rumqui conem et eum ex ero quas dolupta simus

Nos mil mos asinihi tassunt.Nes sit pere simodis aspitas ipsant etur as secepel il mo qui id ut alitas moluptis si ne dunt, excepel itatio. Vid evenien imendus re veliquost, voluptaqui nimagnim sam repuda doluptur? Daerum voluptam cum ius eatur molorerio. Itatus, aut voles es audae. Ra corro cus quatent verem eum rerorem.



BW-1007

Artificial stone bathtub (人造石浴缸)

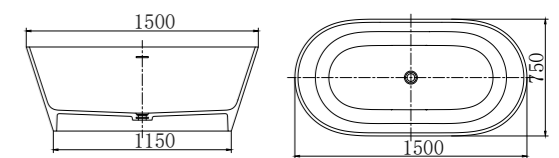
1400*700*550 mm 1500*750*540 mm
 1600*750*550 mm 1650*750*550 mm
 1700*780*550 mm

Material (材质)

人造石

Color (颜色)

白色哑光





Nequae iis maximet oditaquo tet late voloriat omnisto doluptius et la quae simpore pratem expliquis dolorest apit harum aut apellaut la ium sam expera quo omnis exped eum utest pel ipit aborit eture, am alit, quat volupition conet audigen delignis moluptis apitibus cus.Ehenem autempo rumqui conem et eum ex ero quas dolupta simus

Nos mil mos asinihi tassunt.Nes sit pere simodis aspitas ipsant etur as secepel il mo qui id ut alitas moluptis si ne dunt, excepel itatio. Vid evenien imendus re veliquost, voluptaqui nimagnim sam repuda doluptur? Daerum voluptam cum ius eatur molorerio. Itatus, aut voles es audae. Ra corro cus quatent verem eum rerorem.



BW-1009

Artificial stone bathtub (人造石浴缸)

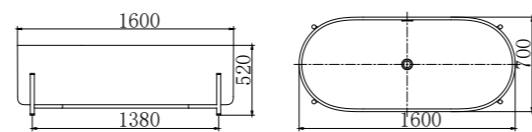
1600*700*520 mm

Material (材质)

人造石

Color (颜色)

白色哑光





Nequae iis maximet oditaquo tet late voloriat omnisto doluptius et la quae simpore pratem expliquis dolorest apit harum aut apellaut la ium sam expera quo omnis exped eum utest pel ipit aborit eture, am alit, quat voluption conet audigen delignis moluptis apitibus cus.Ehenem autempo rumqui conem et eum ex ero quas dolupta simus

Nos mil mos asinihi tassunt.Nes sit pere simodis aspitas ipsant etur as secepel il mo qui id ut alitas moluptis si ne dunt, excepel itatio. Vid evenien imendus re veliquost, voluptaqui nimagnim sam repuda doluptur? Daerum voluptam cum ius eatur molorerio. Itatus, aut voles es audae. Ra corro cus quatent verem eum rerorem.



BW-1010

Artificial stone bathtub (人造石浴缸)

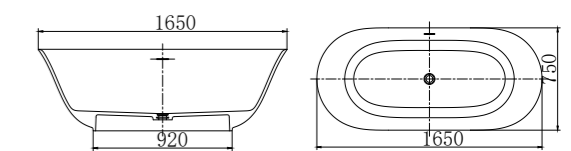
1650*750*540 mm

Material (材质)

人造石

Color (颜色)

白色哑光



BW-1055

Artificial stone bathtub (人造石浴缸)

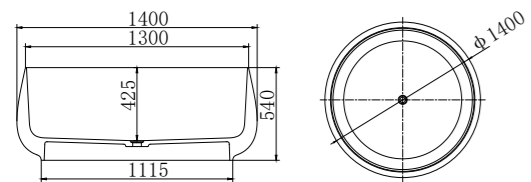
1400*1400*540 mm

Material (材质)

人造石

Color (颜色)

白色哑光





BW-1018

Artificial stone bathtub (人造石浴缸)

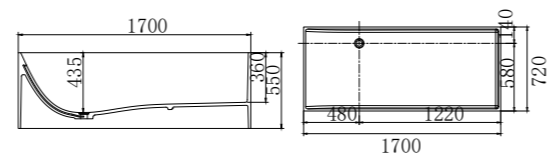
1700*720*550 mm

Material (材质)

人造石

Color (颜色)

白色哑光



Nequae iis maximet oditaquo tet late voloriat omnisto doluptius et la quae simpore pratem expliquis dolorest apit harum aut apellaut la ium sam expera quo omnis exped eum utest pel ipit aborit eture, am alit, quat volupition conet audigen delignis moluptis apitibus cus Ehenem autempo rumqui conem et eum ex ero quas dolupta simus

Nos mil mos asinihi tassunt. Nes sit pere simodis aspitas ipsant etur as secepel il mo qui id ut alitas moluptis si ne dunt, excepel itatio. Vid evenien imendus re veliquost, voluptaqui nimagnim sam repuda doluptur? Daerum voluptam cum ius eatur molorerio. Itatus, aut voles es audae. Ra corro cus quatent verem eum rerorem.



BW-1017

Artificial stone bathtub (人造石浴缸)

1600*720*550 mm

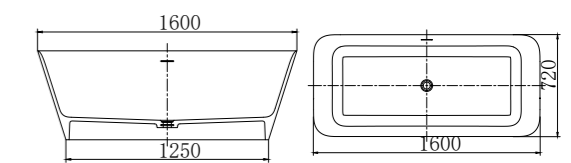
1700*750*550 mm

Material (材质)

人造石

Color (颜色)

白色哑光



Nequae iis maximet oditaquo tet late volariat omnisto doluptius et la quae simpore pratem expliquis dolorest apit harum aut apellaut la ium sam expera quo omnis exped eum utest pel ipit aborit eture, am alit, quat voluption conet audigen delignis moluptis apitibus cus.Ehenem autempo rumqui conem et eum ex ero quas dolupta simus

Nos mil mos asinihi tassunt.Nes sit pere simodis aspiras ipsant etur as secepel il mo qui id ut alitas moluptis si ne dunt, excepel itatio. Vid evenien imendus re veliquost, voluptaqui nimagnim sam repuda doluptur? Daerum voluptam cum ius eatur molorerio. Itatus, aut voles es audae. Ra corro cus quatent verem eum rerorem.



BW-1020

Artificial stone bathtub (人造石浴缸)

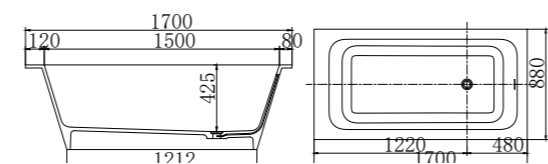
1700*880*540 mm

Material (材质)

人造石

Color (颜色)

白色哑光





BW-1027

Artificial stone bathtub (人造石浴缸)

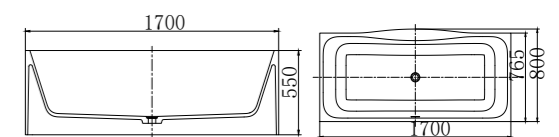
1700*800*550 mm

Material (材质)

人造石

Color (颜色)

白色哑光



Nequae iis maximet oditaquo tet late volariat omnisto doluptius et la quae simpore pratem expliquis dolorest apit harum aut apellaut la ium sam expera quo omnis exped eum utest pel ipit aborit eture, am alit, quat volupition conet audigen delignis moluptis apitibus cus Ehenem autempo rumqui conem et eum ex ero quas dolupta simus

Nos mil mos asinihi tassunt. Nes sit pere simodis aspitas ipsant etur as secepel il mo qui id ut alitas moluptis si ne dunt, excepel itatio. Vid evenien imendus re veliquost, voluptaqui nimagnim sam repuda doluptur? Daerum voluptam cum ius eatur molorerio. Itatus, aut voles es audae. Ra corro cus quatent verem eum rerorem.



BW-1033 & BW-1034

Artificial stone bathtub (人造石浴缸)

1700*700*850 mm

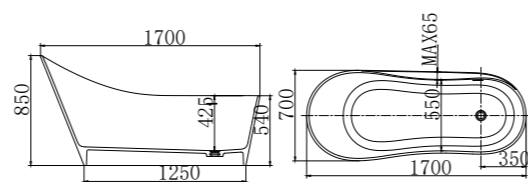
1800*750*850 mm

Material (材质)

人造石

Color (颜色)

白色哑光





BW-1040

Artificial stone bathtub (人造石浴缸)

1500*750*680 mm

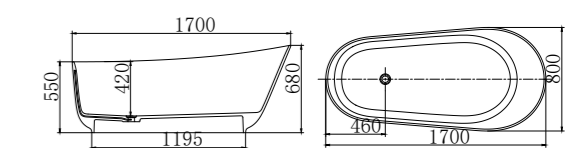
1700*800*680 mm

Material (材质)

人造石

Color (颜色)

白色哑光



Nequae iis maximet oditaquo tet late voloriat omnisto doluptius et la quae simpore pratem expliquis dolorest apit harum aut apellaut la ium sam expera quo omnis exped eum utest pel ipit aborit eture, am alit, quat volupition conet audigen delignis moluptis apitibus cus.Ehenem autempo rumqui conem et eum ex ero quas dolupta simus

Nos mil mos asinihi tassunt.Nes sit pere simodis aspitas ipsant etur as secepel il mo qui id ut alitas moluptis si ne dunt, excepel itatio. Vid evenien imendus re veliquost, voluptaqui nimagnim sam repuda doluptur? Daerum voluptam cum ius eatur molorerio. Itatus, aut voles es audae. Ra corro cus quatent verem eum rerorem.



BW-1038

Artificial stone bathtub (人造石浴缸)

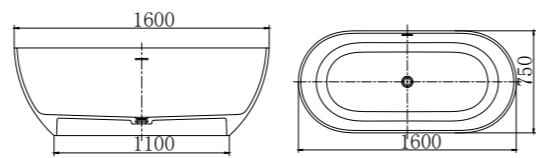
1400*700*550 mm 1500*750*550 mm
1600*750*550 mm 1750*750*550 mm
1700*700*550 mm

Material (材质)

人造石

Color (颜色)

白色哑光





BW-1037

Artificial stone bathtub (人造石浴缸)

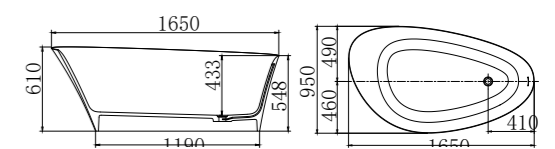
1650*950*610 mm

Material (材质)

人造石

Color (颜色)

白色哑光





BW-1061

Artificial stone bathtub (人造石浴缸)

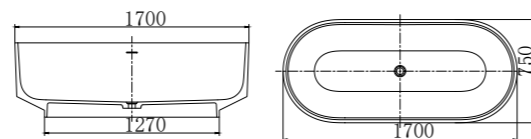
1700*750*540 mm

Material (材质)

人造石

Color (颜色)

白色哑光



Nequae iis maximet oditaquo tet late voloriat omnisto doluptius et la quae simpore pratem expliquis dolorest apit harum aut apellaut la ium sam expera quo omnis exped eum utest pel ipit aborit eture, am alit, quat volupition conet audigen delignis moluptis apitibus cus.Ehenem autempo rumqui conem et eum ex ero quas dolupta simus

Nos mil mos asinihi tassunt.Nes sit pere simodis aspitas ipsant etur as secepel il mo qui id ut alitas moluptis si ne dunt, excepel itatio. Vid evenien imendus re veliquost, voluptaqui nimagnim sam repuda doluptur? Daerum voluptam cum ius eatur molorerio. Itatus, aut voles es audae. Ra corro cus quaten verem eum rerorem.



BW-1041

Artificial stone bathtub (人造石浴缸)

1550*780*600 mm

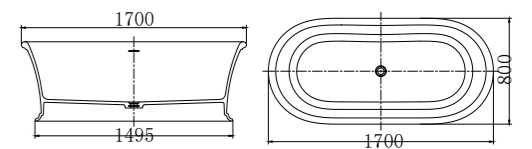
1700*800*600 mm

Material (材质)

人造石

Color (颜色)

白色哑光



Ona

Balanced lines define a bathtub with an organic design and a practical shelf for toiletries.



BW-1046

Artificial stone bathtub (人造石浴缸)

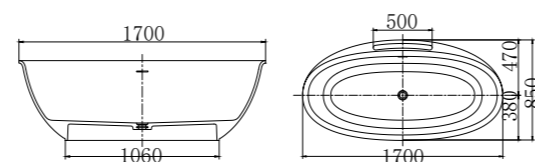
1600*850*550 mm
1700*850*550 mm

Material (材质)

人造石

Color (颜色)

白色哑光





Nequae iis maximet oditaquo tet late voloriat omnisto doluptius et la quae simpore pratem expliquis dolorest apit harum aut apellaut la ium sam expera quo omnis exped eum utest pel ipit aborit eture, am alit, quat volupition conet audigen delignis moluptis apitibus cus.Ehenem autempo rumqui conem et eum ex ero quas dolupta simus

Nos mil mos asinihi tassunt.Nes sit pere simodis aspitas ipsant etur as secepel il mo qui id ut alitas moluptis si ne dunt, excepel itatio. Vid evenien imendus re veliquost, voluptaqui nimagnim sam repuda doluptur? Daerum voluptam cum ius eatur molorerio. Itatus, aut voles es audae. Ra corro cus quatent verem eum rerorem.



BW-1042

Artificial stone bathtub (人造石浴缸)

1500*780*540 mm 1600*800*540 mm

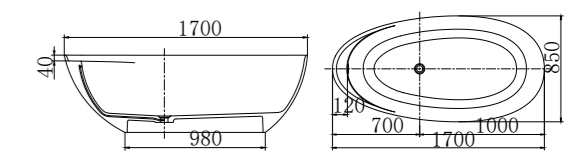
1700*850*540 mm

Material (材质)

人造石

Color (颜色)

白色哑光



Nequae iis maximet oditaquo tet late volariat omnisto doluptius et la quae simpore pratem expliquis dolorest apit harum aut apellaut la ium sam expera quo omnis exped eum utest pel ipit aborit eture, am alit, quat volupition conet audigen delignis moluptis apitibus cus.Ehenem autempo rumqui conem et eum ex ero quas dolupta simus

Nos mil mos asinihi tassunt.Nes sit pere simodis aspitassant etur as secepel il mo qui id ut alitas moluptis si ne dunt, excepel itatio. Vid evenien imendus re veliquost, voluptaqui nimagnim sam repuda doluptur? Daerum voluptam cum ius eatur molorerio. Itatus, aut voles es audae. Ra corro cus quatent verem eum rerorem.



BW-1043

Artificial stone bathtub (人造石浴缸)

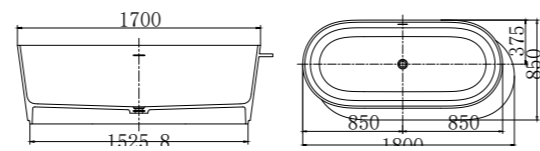
1800*850*550 mm

Material (材质)

人造石

Color (颜色)

白色哑光





Nequae iis maximet oditaquo tet late voloriat omnisto doluptius et la quae simpore pratem expliquis dolorest apit harum aut apellaut la ium sam expera quo omnis exped eum utest pel ipit aborit eture, am alit, quat volupition conet audigen delignis moluptis apitibus cus.Ehenem autempo rumqui conem et eum ex ero quas dolupta simus

Nos mil mos asinihi tassunt.Nes sit pere simodis aspitas ipsant etur as secepel il mo qui id ut alitas moluptis si ne dunt, excepel itatio. Vid evenien imendus re veliquost, voluptaqui nimagnim sam repuda doluptur? Daerum voluptam cum ius eatur molorerio. Itatus, aut voles es audae. Ra corro cus quatent verem eum rerorem.



BW-1044

Artificial stone bathtub (人造石浴缸)

1600*750*550 mm

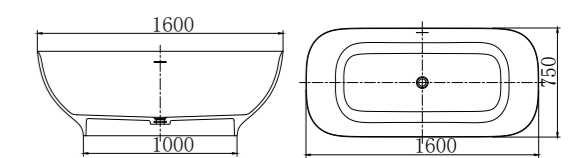
1700*750*550 mm

Material (材质)

人造石

Color (颜色)

白色哑光



Nequae iis maximet oditaquo tet late voloriat omnisto doluptius et la quae simpore pratem expliquis dolorest apit harum aut apellaut la ium sam expera quo omnis exped eum utest pel ipit aborit eture, am alit, quat volupition conet audigen delignis moluptis apitibus cus.Ehenem autempo rumqui conem et eum ex ero quas dolupta simus

Nos mil mos asinihi tassunt.Nes sit pere simodis aspitas ipsant etur as secepel il mo qui id ut alitas moluptis si ne dunt, excepel itatio. Vid evenien imendus re veliquost, voluptaqui nimagnim sam repuda doluptur? Daerum voluptam cum ius eatur molorerio. Itatus, aut voles es audae. Ra corro cus quatent verem eum rerorem.



BW-1048

Artificial stone bathtub (人造石浴缸)

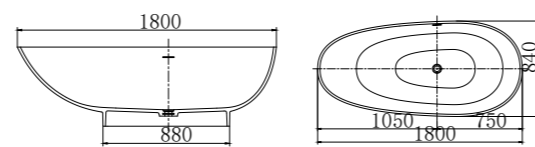
1800*840*550 mm

Material (材质)

人造石

Color (颜色)

白色哑光





BW-1060

Artificial stone bathtub (人造石浴缸)

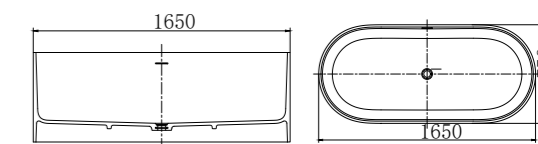
1650*750*575 mm

Material (材质)

人造石

Color (颜色)

白色哑光



BW-1045

Artificial stone bathtub (人造石浴缸)

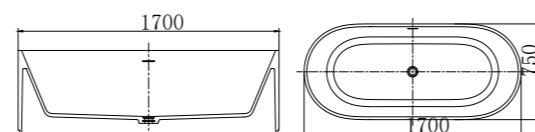
1700*750*550 mm

Material (材质)

人造石

Color (颜色)

白色哑光





BW-1062

Artificial stone bathtub (人造石浴缸)

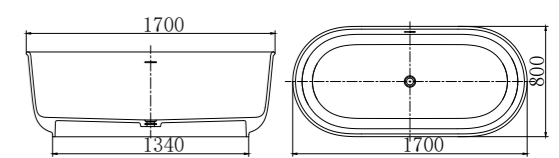
1700*800*580 mm

Material (材质)

人造石

Color (颜色)

灰色哑光



Nequae ilis maximet oditaquo tet late voloriat omnisto doluptius et la quae simpore pratem expliquis dolorest apit harum aut apellaut la ium sam expera quo omnis exped eum utest pel ipit aborit eture, am alit, quat voluption conet audigen delignis moluptis apitibus cus.Ehenem autempo rumqui conem et eum ex ero quas dolupta simus

Nos mil mos asinihi tassunt.Nes sit pere simodis aspitassant etur as secepel il mo qui id ut alitas moluptis si ne dunt, excepel itatio. Vid evenien imendus re veliquost, voluptaqui nimagnim sam repuda doluptur? Daerum voluptam cum ius eatur molorerio. Itatus, aut voles es audae. Ra corro cus quatent verem eum rerorem.





Nequae iis maximet oditaquo tet late voloriat omnisto doluptius et la quae simpore pratem expliquis dolorest apit harum aut apellaut la ium sam expera quo omnis exped eum utest pel ipit aborit eture, am alit, quat volupition conet audigen delignis moluptis apitibus cus.Ehenem autempo rumqui conem et eum ex ero quas dolupta simus

Nos mil mos asinihi tassunt.Nes sit pere simodis aspitas ipsant etur as secepel il mo qui id ut alitas moluptis si ne dunt, excepel itatio. Vid evenien imendus re veliquost, voluptaqui nimagnim sam repuda doluptur? Daerum voluptam cum ius eatur molorerio. Itatus, aut voles es audae. Ra corro cus quatent verem eum rerorem.



BW-1063

Pellet bathtubs (颗粒浴缸)

1700*1300*550mm

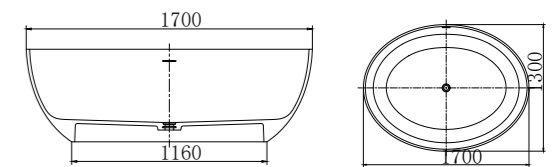
2100*1300*560 mm

Material (材质)

人造石颗粒

Color (颜色)

常规颜色



Nequae iis maximet oditaquo tet late volariat omnisto doluptius et la quae simpore pratem expliquis dolorest apit harum aut apellaut la ium sam expera quo omnis exped eum utest pel ipit aborit eture, am alit, quat volupition conet audigen delignis moluptis apitibus cus.Ehenem autempo rumqui conem et eum ex ero quas dolupta simus

Nos mil mos asinihi tassunt.Nes sit pere simodis aspitas ipsant etur as secepel il mo qui id ut alitas moluptis si ne dunt, excepel itatio. Vid evenien imendus re veliquost, voluptaqui nimagnim sam repuda doluptur? Daerum voluptam cum ius eatur molorerio. Itatus, aut voles es audae. Ra corro cus quatent verem eum rerorem.



BW-1005

Pellet bathtubs (颗粒浴缸)

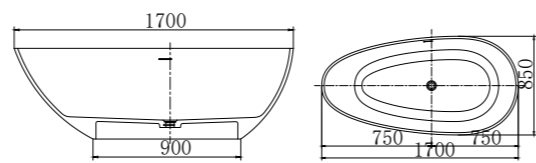
1300*700*540 mm 1400*750*520 mm
1500*780*540 mm 1600*800*540 mm
1700*850*550 mm 1800*850*550 mm

Material (材质)

人造石颗粒

Color (颜色)

常规颜色

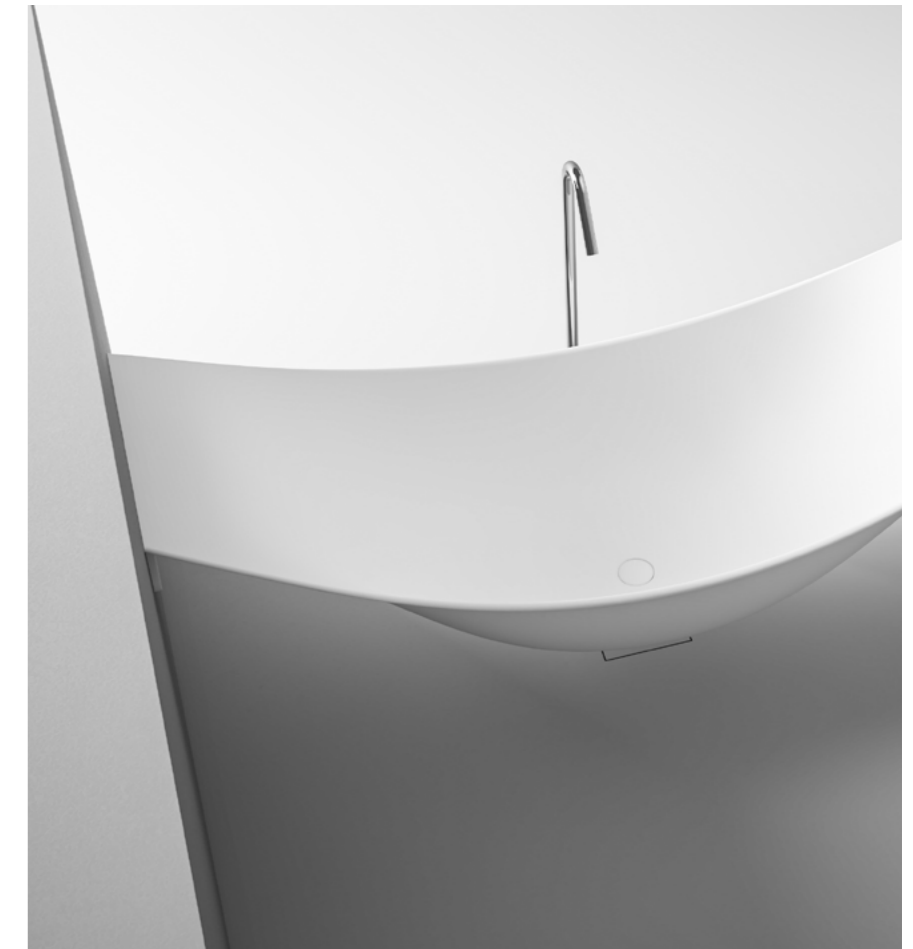






Ona

Balanced lines define a bathtub with an organic design and a practical shelf for toiletries.



BW-1065

Hammock Bathtub (吊床浴缸)

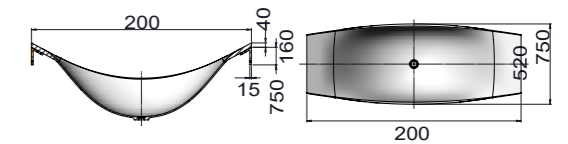
1800-2200*750*750 mm

Material (材质)

复合材料

Color (颜色)

白色





BW-1002

Artificial stone bathtub (人造石浴缸)

1400*1400*585 mm

Material (材质)

人造石

Color (颜色)

白色哑光

BW-1067

Artificial stone bathtub (人造石浴缸)

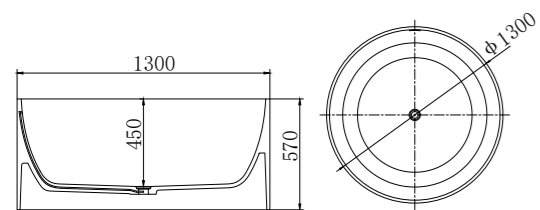
1300*1300*570 mm

Material (材质)

人造石

Color (颜色)

白色哑光





Nequae iis maximet oditaquo tet late voloriat omnisto doluptius et la quae simpore pratem expliquis dolorest apit harum aut apellaut la ium sam expera quo omnis exped eum utest pel ipit aborit eture, am alit, quat volupition conet audigen delignis moluptis apitibus cus.Ehenem autempo rumqui conem et eum ex ero quas dolupta simus

Nos mil mos asinihi tassunt.Nes sit pere simodis aspitas ipsant etur as secepel il mo qui id ut alitas moluptis si ne dunt, excepel itatio. Vid evenien imendus re veliquost, voluptaqui nimagnim sam repuda doluptur? Daerum voluptam cum ius eatur molorerio. Itatus, aut voles es audae. Ra corro cus quatent verem eum rerorem.



BW-1068

Artificial stone bathtub (人造石浴缸)

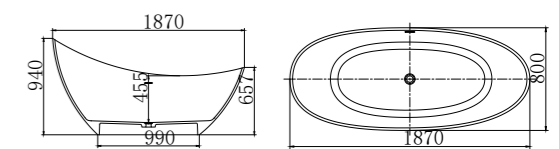
1870*800*940 mm

Material (材质)

人造石

Color (颜色)

白色哑光





BW-1071

Artificial stone bathtub (人造石浴缸)

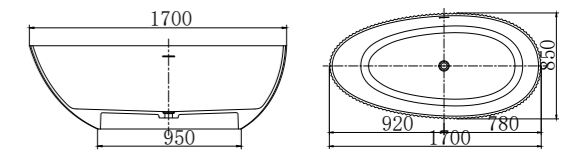
1700*850*550 mm

Material (材质)

人造石

Color (颜色)

白色哑光



BW-1070

Artificial stone bathtub (人造石浴缸)

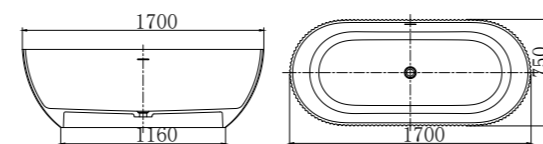
1700*750*550 mm

Material (材质)

人造石

Color (颜色)

白色哑光





BW-1072

Artificial stone bathtub (人造石浴缸)

1600*760*560 mm

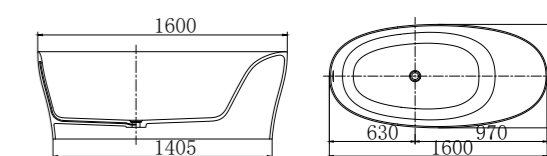
1700*800*600 mm

Material (材质)

人造石

Color (颜色)

白色



BW-1058

Artificial stone bathtub (人造石浴缸)

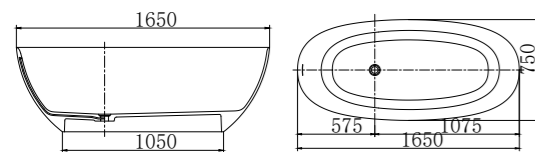
1650*750*550 mm

Material (材质)

人造石

Color (颜色)

白色哑光





BW-1052

Artificial stone bathtub (人造石浴缸)

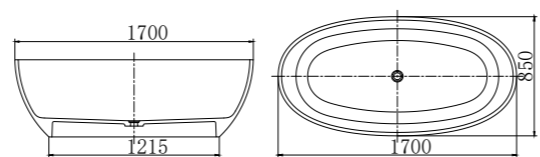
1700*850*550 mm

Material (材质)

人造石

Color (颜色)

白色哑光



Nequae iis maximet oditaquo tet late voloriat omnisto doluptius et la quae simpore pratem expliquis dolorest apit harum aut apellaut la ium sam expera quo omnis exped eum utest pel ipit aborit eture, am alit, quat volupition conet audigen delignis moluptis apitibus cus.Ehenem autempo rumqui conem et eum ex ero quas dolupta simus

Nos mil mos asinihi tassunt.Nes sit pere simodis aspitas ipsant etur as secepel il mo qui id ut alitas moluptis si ne dunt, excepel itatio. Vid evenien imendus re veliquost, voluptaqui nimagnim sam repuda doluptur? Daerum voluptam cum ius eatur molorerio. Itatus, aut voles es audae. Ra corro cus quatent verem eum rerorem.



BW-1054

Artificial stone bathtub (人造石浴缸)

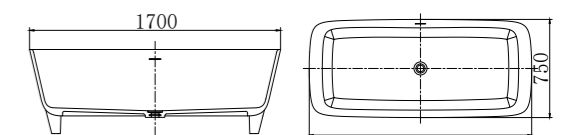
1700*750*570 mm

Material (材质)

人造石

Color (颜色)

白色哑光





Ona

Balanced lines define a bathtub with an organic design and a practical shelf for toiletries.



BW-1057

Artificial stone bathtub (人造石浴缸)

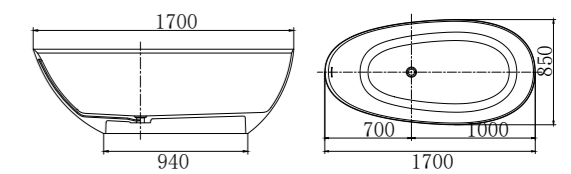
1700*850*550 mm

Material (材质)

人造石

Color (颜色)

白色哑光



Nequae iis maximet oditaquo tet late voloriat omnisto doluptius et la quae simpore pratem expliquis dolorest apit harum aut apellaut la ium sam expera quo omnis exped eum utest pel ipit aborit eture, am alit, quat volupition conet audigen delignis moluptis apitibus cus.Ehenem autempo rumqui conem et eum ex ero quas dolupta simus

Nos mil mos asinihi tassunt.Nes sit pere simodis aspitas ipsant etur as secepel il mo qui id ut alitas moluptis si ne dunt, excepel itatio. Vid evenien imendus re veliquost, voluptaqui nimagnim sam repuda doluptur? Daerum voluptam cum ius eatur molorerio. Itatus, aut voles es audae. Ra corro cus quatent verem eum rerorem.



BW-1053

Artificial stone bathtub (人造石浴缸)

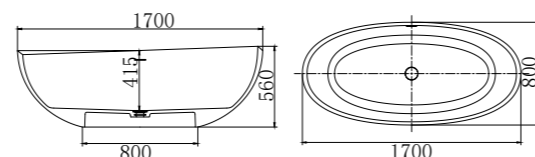
1700*800*560 mm

Material (材质)

人造石

Color (颜色)

白色哑光



BW-1011

Artificial stone bathtub (人造石浴缸)

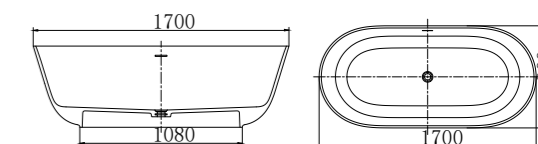
1700*800*540 mm

Material (材质)

人造石

Color (颜色)

白色哑光





BW-1039

Artificial stone bathtub (人造石浴缸)

1500*750*550 mm

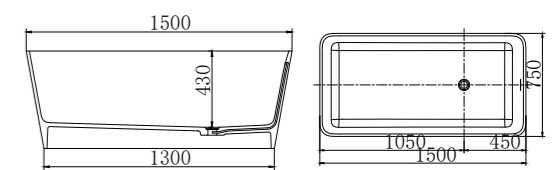
1700*800*550 mm

Material (材质)

人造石

Color (颜色)

白色哑光





BW-1032

Artificial stone bathtub (人造石浴缸)

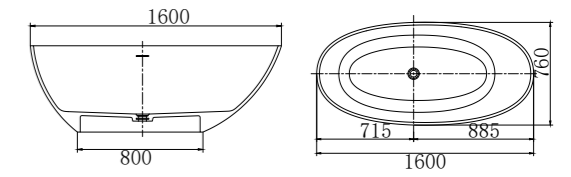
1600*760*550 mm

Material (材质)

人造石

Color (颜色)

白色哑光



BW-1022

Artificial stone bathtub (人造石浴缸)

1650*800*550 mm

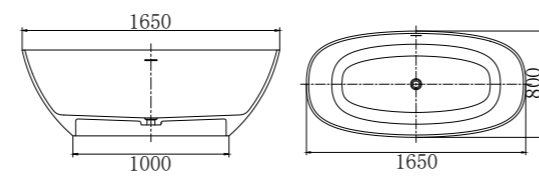
1800*870*540 mm

Material (材质)

人造石

Color (颜色)

白色哑光



Nequae iis maximet oditaquo tet late voloriat omnisto doluptius et la quae simpore pratem expliquis dolorest apit harum aut apellaut la ium sam expera quo omnis exped eum utest pel ipit aborit eture, am alit, quat voluption conet audigen delignis moluptis apitibus cus Ehenem autempo rumqui conem et eum ex ero quas dolupta simus

Nos mil mos asinihi tassunt. Nes sit pere simodis aspitas ipsant etur as secepel il mo qui id ut alitas moluptis si ne dunt, excepel itatio. Vid evenien imendus re veliquost, voluptaqui nimagnim sam repuda doluptur? Daerum voluptam cum ius eatur molorerio. Itatus, aut voles es audae. Ra corro cus quatent verem eum rerorem.



BW-1074

Artificial stone bathtub (人造石浴缸)

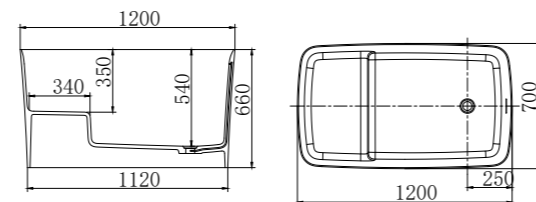
1200*700*660 mm

Material (材质)

人造石

Color (颜色)

白色哑光



BW-1076

Artificial stone bathtub (人造石浴缸)

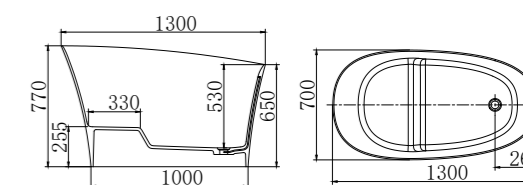
1300*700*770 mm

Material (材质)

人造石

Color (颜色)

白色哑光



In creating a perfect bathing experience, the details of the bathtub play a vital role. They are the silent code of comfort and luxury. Details are reflected in the placement of the bathtub. Carefully planned to make it blend harmoniously with the surrounding environment, or become the focus of the space, or cleverly hidden in a corner to create a unique atmosphere. For example, leaning against a large window, you can enjoy the beautiful scenery outside the window while taking a bath and get in close contact with nature; or located in the center of the bathroom, surrounded by warm lights and soft fabrics. Details also lie in the use of space. The clever storage design can keep bath towels, bathrobes and bath products close at hand, but they are arranged in an orderly manner without destroying the overall beauty. The floor material around the bathtub is non-slip and comfortable to ensure your safety and comfort when entering and exiting the bathtub.

The height of the bathtub is also a science of details. The right height allows you to step in easily without feeling strenuous when getting up. The surrounding handrail design may seem insignificant, but it can provide stable support when needed, giving you a sense of security. Furthermore, the matching of the bathtub and other bathroom facilities cannot be ignored. The coordination of colors or the sharp contrast can show a unique style. It echoes the style of wall decoration and sanitary ware to build a harmonious and comfortable overall environment. With these details, the bathtub is no longer just a bathing tool, but a spiritual sanctuary where people can completely relax their body and mind and enjoy tranquility and beauty.

人造石立柱盆

ARTIFICIAL STONE PEDESTAL BASIN

Artelinea Was Born In The Heart Of The Italian Renaissance. Its Profound Cultural Heritage And Innovative Spirit Have Subtly Promoted The Development Of The Bathroom Furniture Industry.





BW-3050

Artificial stone pedestal basin (人造石立柱盆)

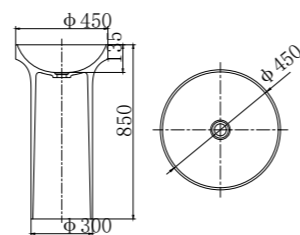
450*450*850 mm

Material (材质)

人造石

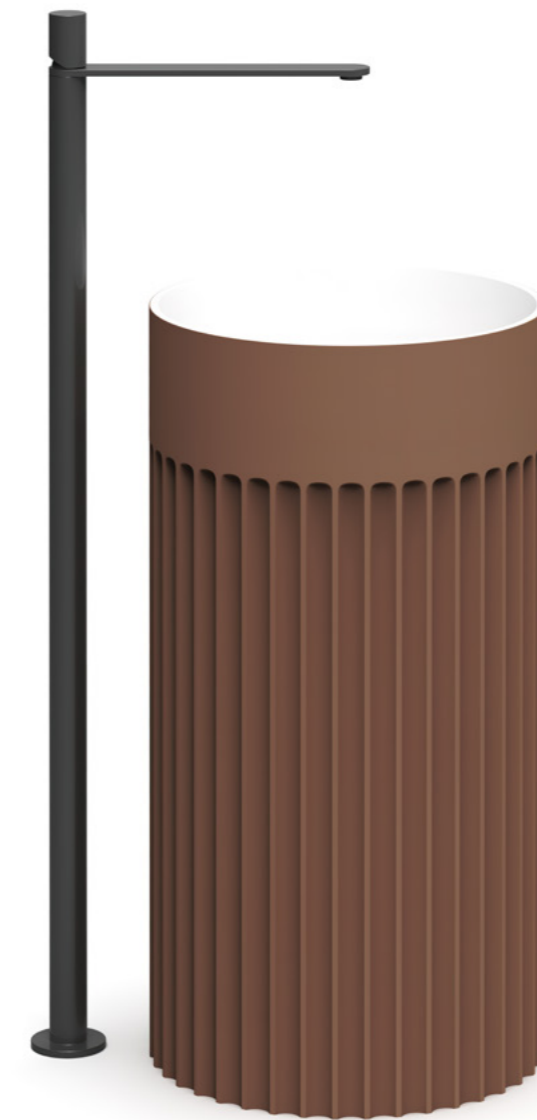
Color (颜色)

白色



Nequae ilis maximet oditaquo tet late volariat omnisto doluptius et la quae simpore pratem expliquis dolorest apit harum aut apellaut la ium sam expera quo omnis exped eum utest pel ipit aborit eture, am alit, quat volupition conet audigen delignis moluptis apitibus cus.Ehenem autempo rumqui conem et eum ex ero quas dolupta simus

Nos mil mos asinihi tassunt.Nes sit pere simodis aspitas ipsant etur as secepel il mo qui id ut alitas moluptis si ne dunt, excepel itatio. Vid evenien imendus re veliquost, voluptaqui nimagnim sam repuda doluptur? Daerum voluptam cum ius eatur molorerio. Itatus, aut voles es audae. Ra corro cus quaten verem eum rerorem.



BW-3051

Artificial stone pedestal basin (人造石立柱盆)

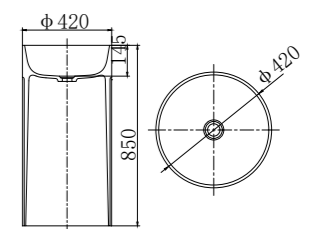
420*420*850 mm

Material (材质)

人造石

Color (颜色)

白色



Nequae iis maximet oditaquo tet late volariat omnisto doluptius et la quae simpore pratem expliquis dolorest apit harum aut apellaut la ium sam expera quo omnis exped eum utest pel ipit aborit eture, am alit, quat volupition conet audigen delignis moluptis apitibus cus.Ehenem autempo rumqui conem et eum ex ero quas dolupta simus

Nos mil mos asinihi tassunt.Nes sit pere simodis aspitas ipsant etur as secepel il mo qui id ut alitas moluptis si ne dunt, excepel itatio. Vid evenien imendus re veliquost, voluptaqui nimagnim sam repuda doluptur? Daerum voluptam cum ius eatur molorerio. Itatus, aut voles es audae. Ra corro cus quatent verem eum rerorem.



BW-3013 & BW-3030

Artificial stone pedestal basin (人造石立柱盆)

480*475*900 mm

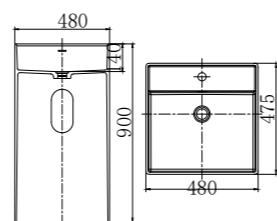
580*430*900 mm

Material (材质)

人造石

Color (颜色)

白色哑光



BW-3011

Artificial stone pedestal basin (人造石立柱盆)

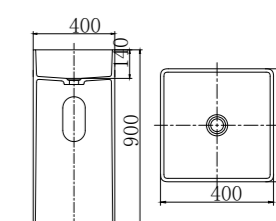
400*400*900 mm

Material (材质)

人造石

Color (颜色)

白色哑光





BW-3041 & BW-3049 & BW-3054

Artificial stone pedestal basin (人造石立柱盆)

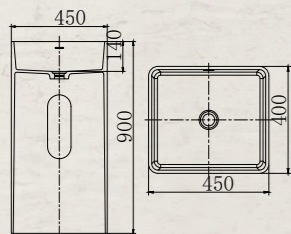
400*400*850 mm 450*400*900 mm
450*450*900 mm

Material (材质)

人造石

Color (颜色)

白色哑光



BW-3029

Artificial stone pedestal basin (人造石立柱盆)

450*450*900 mm

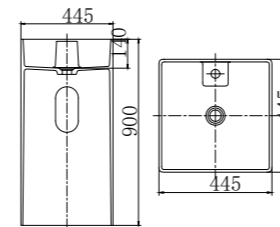


Material (材质)

人造石

Color (颜色)

白色哑光



BW-3028

Artificial stone pedestal basin (人造石立柱盆)

450*450*900 mm

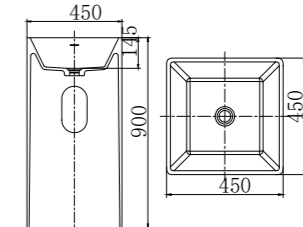


Material (材质)

人造石

Color (颜色)

白色哑光





BW-3012

Artificial stone pedestal basin (人造石立柱盆)

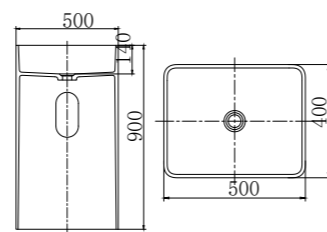
500*400*900 mm

Material (材质)

人造石

Color (颜色)

白色哑光



Nequae ilis maximet oditaquo tet late voloriat omnisto doluptius et la quae simpore pratem expliquis dolorest apit harum aut apellaut la ium sam expera quo omnis exped eum utest pel ipit aborit eture, am alit, quat volupition conet audigen delignis moluptis apitibus cus.Ehenem autempo rumqui conem et eum ex ero quas dolupta simus

Nos mil mos asinihi tassunt.Nes sit pere simodis aspitas ipsant etur as secepel il mo qui id ut alitas moluptis si ne dunt, excepel itatio. Vid evenien imendus re veliquost, voluptaqui nimagnim sam repuda doluptur? Daerum voluptam cum ius eatur molorerio. Itatus, aut voles es audae. Ra corro cus quatent verem eum rorem.



BW-3034

Artificial stone pedestal basin (人造石立柱盆)

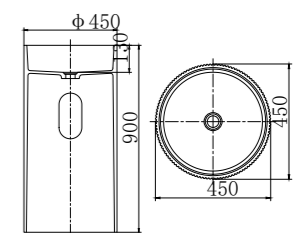
450*450*900 mm

Material (材质)

人造石

Color (颜色)

木纹



BW-3001

Artificial stone pedestal basin (人造石立柱盆)

400*400*900 mm

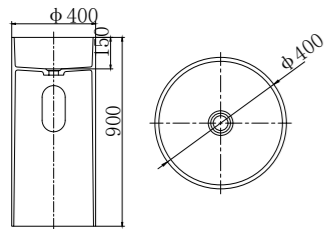


Material (材质)

人造石

Color (颜色)

白色哑光



BW-3004

Artificial stone pedestal basin (人造石立柱盆)

450*450*900 mm

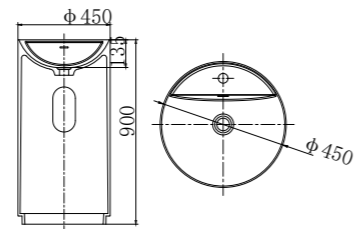


Material (材质)

人造石

Color (颜色)

白色哑光



BW-3003

Artificial stone pedestal basin (人造石立柱盆)

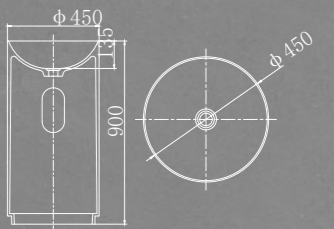
450*450*900 mm

Material (材质)

人造石

Color (颜色)

白色哑光



Nequae iis maximet oditaquo tet late voloriat omnisto doluptius et la quae simpore pratem expliquis dolorest apit harum aut apellaut la ium sam expera quo omnis exped eum utest pel ipit aborit eture, am alit, quat volupition conet audigen delignis moluptis apitibus cus.Ehenem autempo rumqui conem et eum ex ero quas dolupta simus

Nos mil mos asinihi tassunt.Nes sit pere simodis aspitas ipsant etur as secepel il mo qui id ut alitas moluptis si ne dunt, excepel itatio. Vid evenien imendus re veliquost, voluptaqui nimagnim sam repuda doluptur? Daerum voluptam cum ius eatur molorerio. Itatus, aut voles es audae. Ra corro cus quatent verem eum rerorem.



BW-3006

Artificial stone pedestal basin (人造石立柱盆)

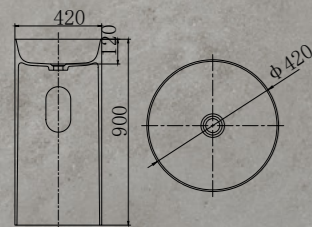
420*420*900 mm

Material (材质)

人造石

Color (颜色)

白色哑光



BW-3004

Artificial stone pedestal basin (人造石立柱盆)

450*450*900 mm

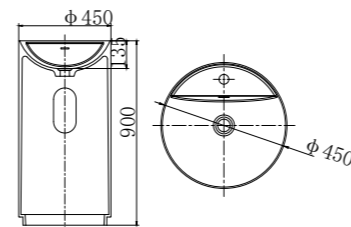


Material (材质)

人造石

Color (颜色)

白色哑光



BW-3007

Artificial stone pedestal basin (人造石立柱盆)

420*420*900 mm

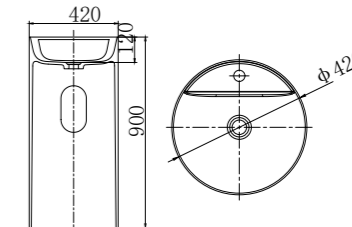


Material (材质)

人造石

Color (颜色)

白色哑光



BW-3015

Artificial stone pedestal basin (人造石立柱盆)

450*450*830 mm

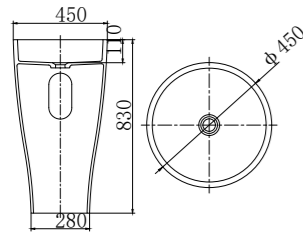


Material (材质)

人造石

Color (颜色)

白色哑光



BW-3019

Artificial stone pedestal basin (人造石立柱盆)

450*450*850 mm

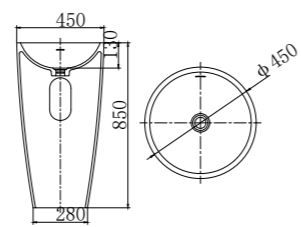


Material (材质)

人造石

Color (颜色)

白色哑光



BW-3014

Artificial stone pedestal basin (人造石立柱盆)

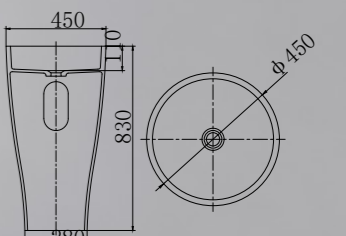
450*450*830 mm

Material (材质)

人造石

Color (颜色)

白色哑光



BW-3021

Artificial stone pedestal basin (人造石立柱盆)

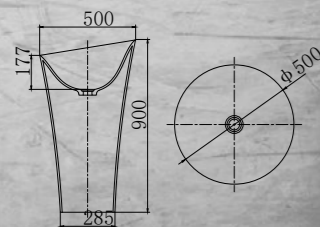
500*500*900 mm

Material (材质)

人造石

Color (颜色)

白色哑光



BW-3039

Artificial stone pedestal basin (人造石立柱盆)

500*476*890 mm

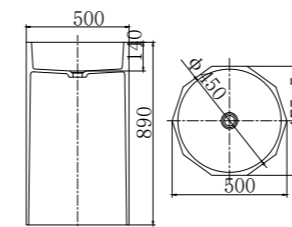


Material (材质)

人造石

Color (颜色)

白色



BW-3032

Artificial stone pedestal basin (人造石立柱盆)

595*410*820 mm

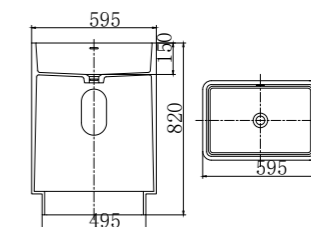


Material (材质)

人造石

Color (颜色)

白色哑光



Nequae ilis maximet oditaquo tet late volariat omnisto doluptius et la quae simpore pratem expliquis dolorest apit harum aut apellaut la ium sam expera quo omnis exped eum utest pel ipit aborit eture, am alit, quat voluption conet audigen delignis moluptis apitibus cus.Ehenem autempo rumqui conem et eum ex ero quas dolupta simus

Nos mil mos asinihi tassunt.Nes sit pere simodis aspitassant etur as secepel il mo qui id ut alitas moluptis si ne dunt, excepel itatio. Vid evenien imendus re veliquost, voluptaqui nimagnim sam repuda doluptur? Daerum voluptam cum ius eatur molorerio. Itatus, aut voles es audae. Ra corro cus quatent verem eum rerorem.



BW-3020

Artificial stone pedestal basin (人造石立柱盆)

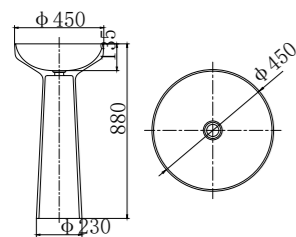
450*450*880 mm

Material (材质)

人造石

Color (颜色)

彩色哑光



BW-3053

Artificial stone pedestal basin (人造石立柱盆)

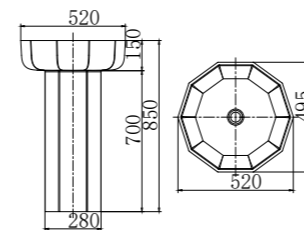
520*495*850 mm

Material (材质)

人造石

Color (颜色)

白色



BW-3033

Artificial stone pedestal basin (人造石立柱盆)

480*480*850 mm

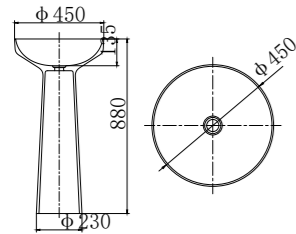


Material (材质)

人造石

Color (颜色)

白色哑光



BW-3040

Artificial stone pedestal basin (人造石立柱盆)

450*450*900 mm

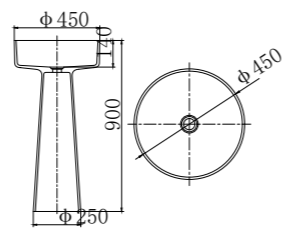


Material (材质)

人造石

Color (颜色)

白色哑光



BW-3042

Artificial stone pedestal basin (人造石立柱盆)

850*500*460 mm

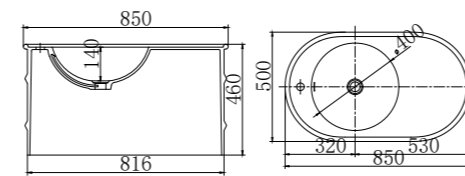


Material (材质)

人造石

Color (颜色)

白色哑光



BW-3052

Artificial stone pedestal basin (人造石立柱盆)

400*370*450 mm

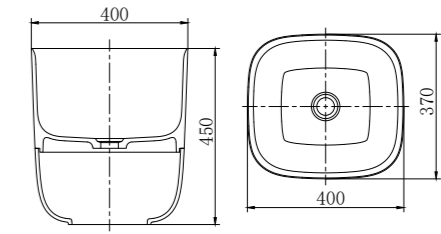


Material (材质)

人造石

Color (颜色)

白色哑光





Ona

Balanced lines define a bathtub with an organic design and a practical shelf for toiletries.



BW-3048

Artificial Stone Basin (人造石盆)

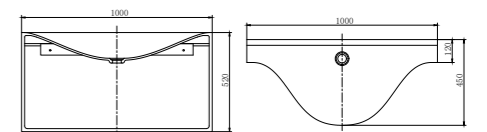
1000*450*520 mm

Material (材质)

人造石

Color (颜色)

白色哑光



Nequae iis maximet oditaquo tet late volariat omnisto doluptius et la quae simpore pratem expliquis dolorest apit harum aut apellaut la ium sam expera quo omnis exped eum utest pel ipit aborit eture, am alit, quat volupition conet audigen delignis moluptis apitibus cus.Ehenem autempo rumqui conem et eum ex ero quas dolupta simus

Nos mil mos asinihi tassunt.Nes sit pere simodis aspitas ipsant etur as secepel il mo qui id ut alitas moluptis si ne dunt, excepel itatio. Vid evenien imendus re veliquost, voluptaqui nimagnim sam repuda doluptur? Daerum voluptam cum ius eatur molorerio. Itatus, aut voles es audae. Ra corro cus quatent verem eum rerorem.



BW-3045

Artificial Stone Hanging Basin (人造石挂盆)

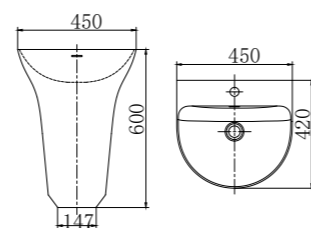
450*420*600 mm

Material (材质)

人造石

Color (颜色)

白色哑光



Nequae iis maximet oditaquo tet late volariat omnisto doluptius et la quae simpore pratem expliquis dolorest apit harum aut apellaut la ium sam expera quo omnis exped eum utest pel ipit aborit eture, am alit, quat voluption conet audigen delignis moluptis apitibus cus.Ehenem autempo rumqui conem et eum ex ero quas dolupta simus

Nos mil mos asinihi tassunt.Nes sit pere simodis aspitas ipsant etur as secepel il mo qui id ut alitas moluptis si ne dunt, excepel itatio. Vid evenien imendus re veliquost, voluptaqui nimagnim sam repuda doluptur? Daerum voluptam cum ius eatur molorerio. Itatus, aut voles es audae. Ra corro cus quatent verem eum rerorem.



BW-3044

Artificial Stone Hanging Basin (人造石挂盆)

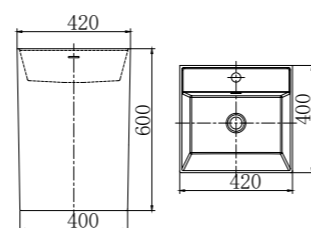
420*400*600 mm

Material (材质)

人造石

Color (颜色)

白色哑光



BW-3046

Artificial Stone Hanging Basin (人造石挂盆)

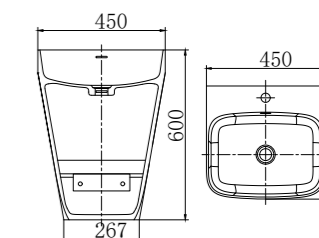
450*430*600 mm

Material (材质)

人造石

Color (颜色)

白色哑光



In creating a perfect bathing experience, the details of the bathtub play a vital role. They are the silent code of comfort and luxury. Details are reflected in the placement of the bathtub. Carefully planned to make it blend harmoniously with the surrounding environment, or become the focus of the space, or cleverly hidden in a corner to create a unique atmosphere. For example, leaning against a large window, you can enjoy the beautiful scenery outside the window while taking a bath and get in close contact with nature; or located in the center of the bathroom, surrounded by warm lights and soft fabrics. Details also lie in the use of space. The clever storage design can keep bath towels, bathrobes and bath products close at hand, but they are arranged in an orderly manner without destroying the overall beauty. The floor material around the bathtub is non-slip and comfortable to ensure your safety and comfort when entering and exiting the bathtub.

The height of the bathtub is also a science of details. The right height allows you to step in easily without feeling strenuous when getting up. The surrounding handrail design may seem insignificant, but it can provide stable support when needed, giving you a sense of security. Furthermore, the matching of the bathtub and other bathroom facilities cannot be ignored. The coordination of colors or the sharp contrast can show a unique style. It echoes the style of wall decoration and sanitary ware to build a harmonious and comfortable overall environment. With these details, the bathtub is no longer just a bathing tool, but a spiritual sanctuary where people can completely relax their body and mind and enjoy tranquility and beauty.

人造石洗手盆 ARTIFICIAL STONE WASH BASIN

Artelinea Was Born In The Heart Of The Italian Renaissance. Its Profound Cultural Heritage And Innovative Spirit Have Subtly Promoted The Development Of The Bathroom Furniture Industry.





BW-2125

Artificial stone wash basin (人造石洗手盆)

600*420*155 mm

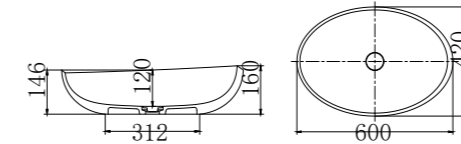


Material (材质)

人造石

Color (颜色)

白色哑光



BW-2085

Artificial stone wash basin (人造石洗手盆)

400*400*140 mm

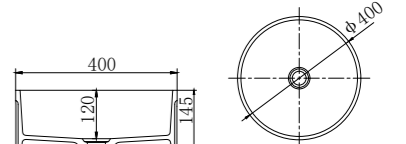


Material (材质)

人造石

Color (颜色)

白色哑光



BW-2005

Artificial stone wash basin (人造石洗手盆)

400*400*120 mm

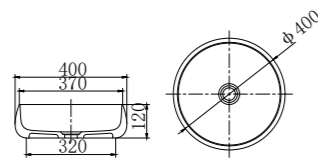


Material (材质)

人造石

Color (颜色)

白色哑光



BW-2008

Artificial stone wash basin (人造石洗手盆)

400*400*120 mm

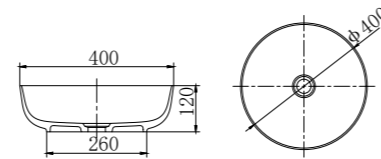


Material (材质)

人造石

Color (颜色)

白色哑光



BW-2001

Artificial stone wash basin (人造石洗手盆)

400*400*140 mm

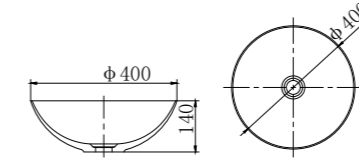


Material (材质)

人造石

Color (颜色)

白色哑光



BW-2008

Artificial stone wash basin (人造石洗手盆)

400*400*120 mm

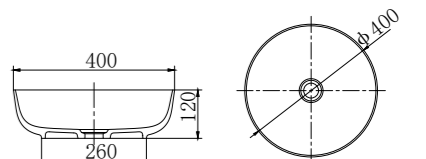


Material (材质)

人造石

Color (颜色)

白色哑光



BW-2019

Artificial stone wash basin (人造石洗手盆)

600*400*120 mm

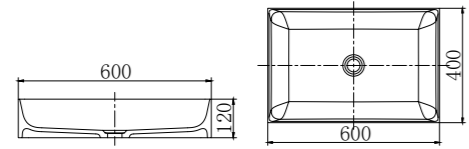


Material (材质)

人造石

Color (颜色)

白色哑光



BW-2009

Artificial stone wash basin (人造石洗手盆)

400*400*120 mm

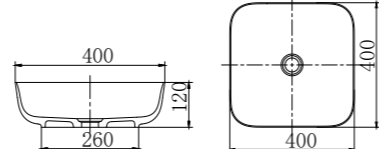


Material (材质)

人造石

Color (颜色)

白色哑光



BW-2115

Artificial stone wash basin (人造石洗手盆)

540*350*120 mm

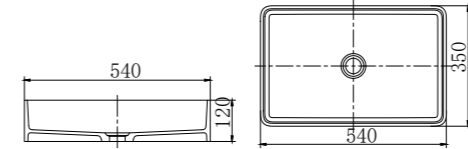


Material (材质)

人造石

Color (颜色)

白色哑光



BW-2119

Artificial stone wash basin (人造石洗手盆)

600*380*135 mm

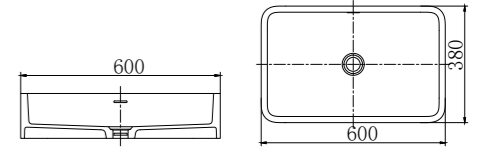


Material (材质)

人造石

Color (颜色)

白色哑光



BW-2020

Artificial stone wash basin (人造石洗手盆)

600*400*120 mm

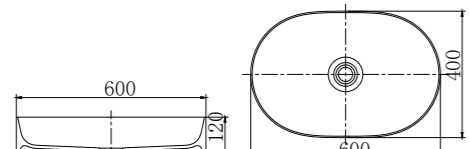


Material (材质)

人造石

Color (颜色)

白色哑光



BW-2129

Artificial stone wash basin (人造石洗手盆)

550*340*130 mm

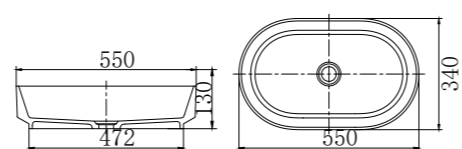


Material (材质)

人造石

Color (颜色)

白色哑光



BW-2032

Artificial stone wash basin (人造石洗手盆)

570*380*150 mm

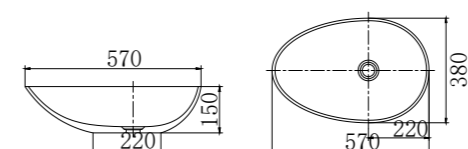


Material (材质)

透明树脂

Color (颜色)

常规颜色



BW-2036

Artificial stone wash basin (人造石洗手盆)

1200*480*850 mm

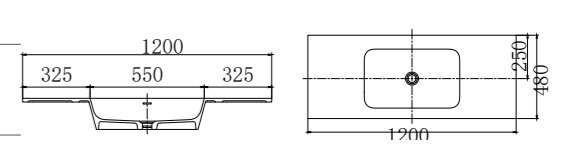


Material (材质)

人造石

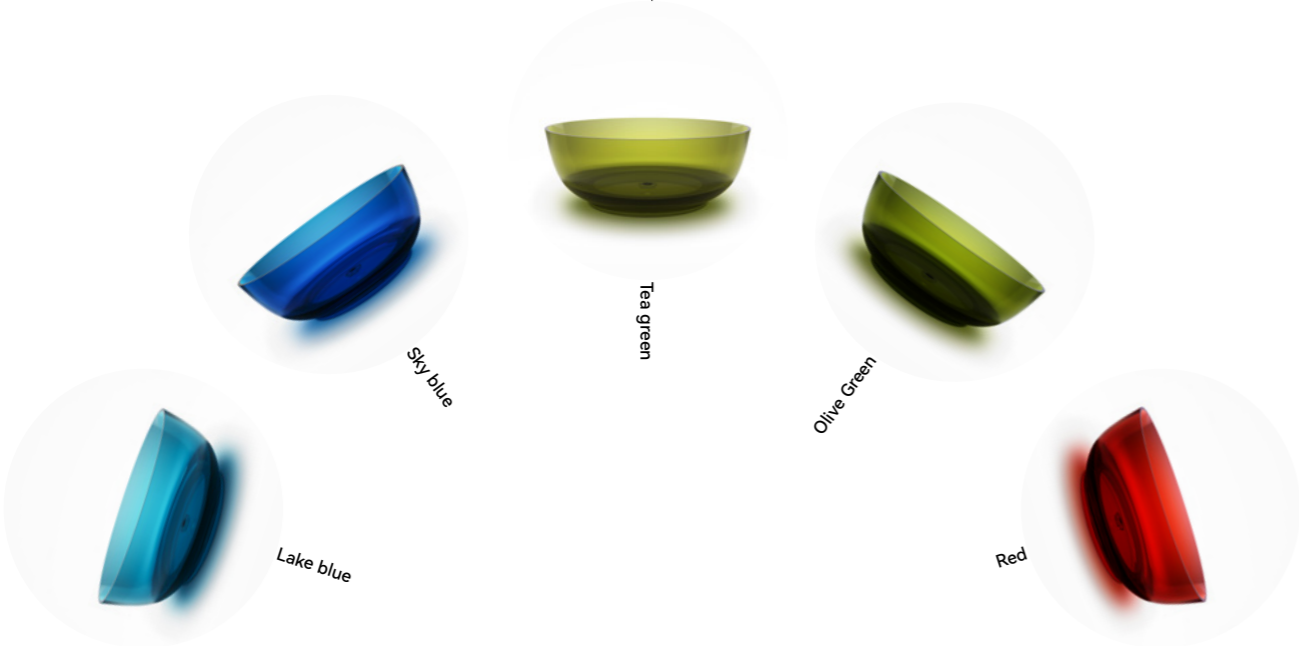
Color (颜色)

白色哑光

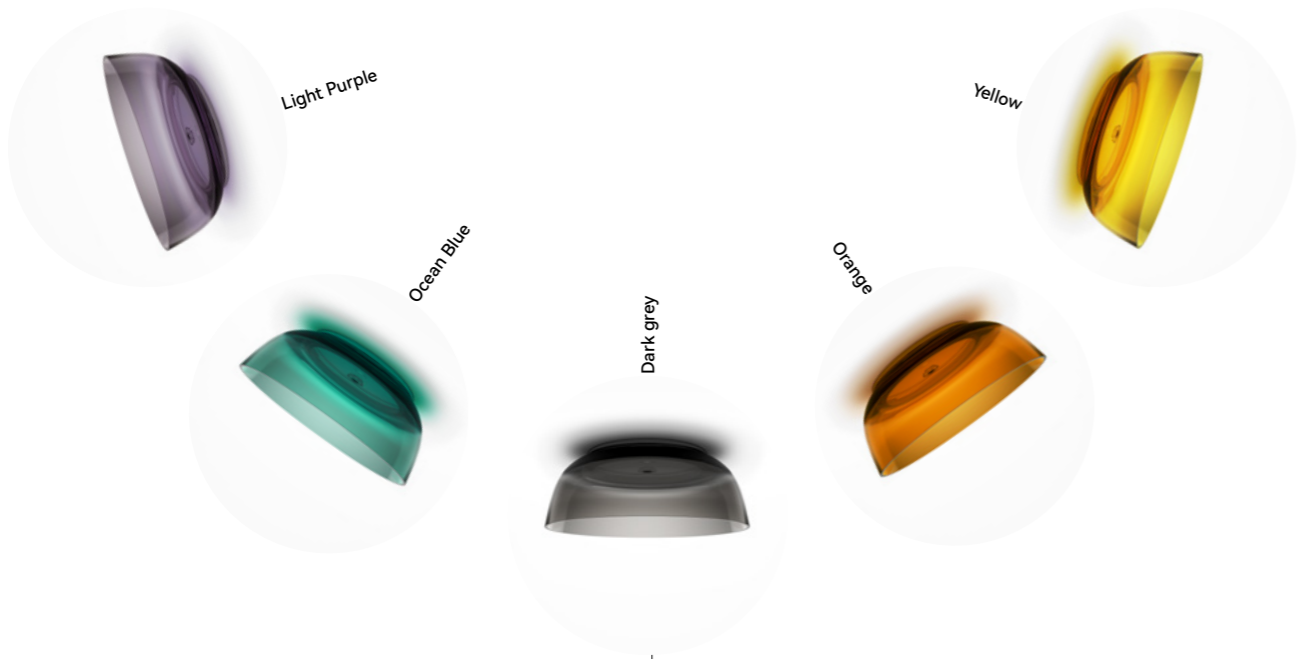


TRANSPARENT RESIN COLOR OPTIONS

Other colors can be customized according to your preference

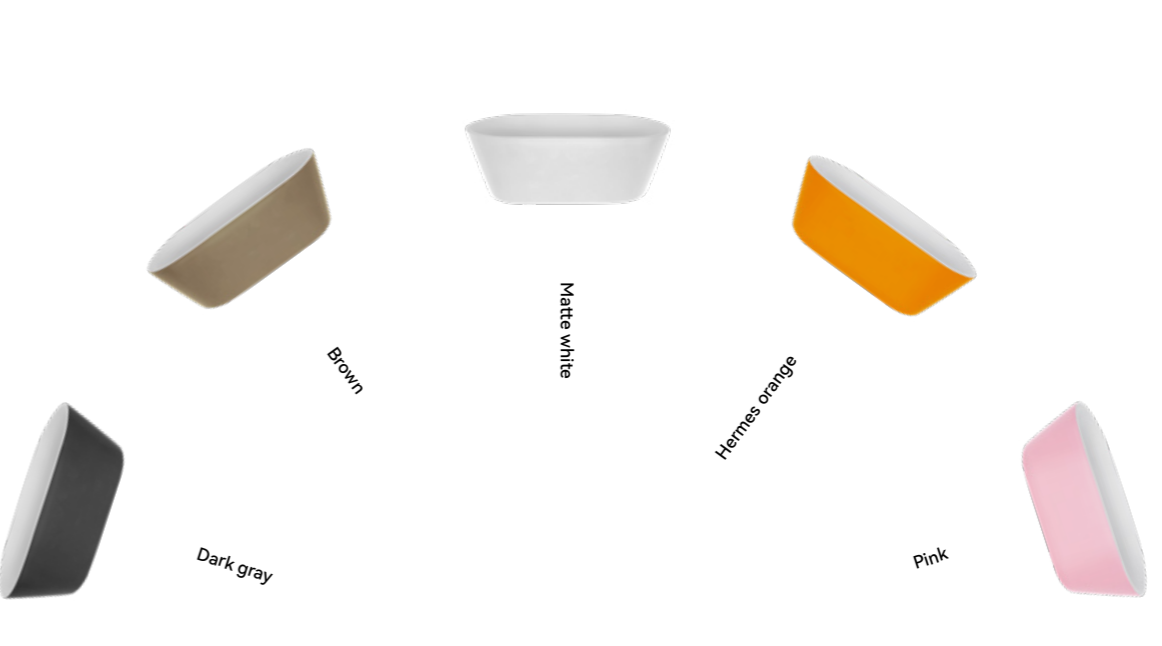


C O L O R S



ARTIFICIAL STONE COLOR SELECTION

Other colors can be customized according to your preference



C O L O R S

